

Fine Jewellery, Watches & Silver, 22nd Feb, 2024 09:30

- 1 Henri Dubret - an Art Nouveau gem-set foliage panel ring, circa 1900s, the navette-shaped ring head framing pierced and enamelled ivy leaf motifs, decorated with delicate black enamelled foliage on the edge, interspersed with old-cut diamond highlights, centred with a cushion-cut citrine and flanked by single-cut diamonds on the shoulders, D-section shank signed 'H.Dubret' and struck with French eagle head mark (indicating 18ct gold), as well as the lozenge maker's mark, ring head 2.9 x 1.2 cm, ring size O, total weight of item 4.5 grams. **£800-1,200**



- 2 A late 19th-century diamond set guirlande pendant, with rose cut diamonds in a pierced openwork setting in yellow metal tested as 14ct gold, measuring approximately 50mm x 28mm, with Austro-Hungarian assay marks, town mark for Vienna and later, French 585 St Jacques shell import marks, 10.3 grams. **£400-600**



- 3 An early 19th-century acrostic gem-set Regard brooch, set with a ruby, emerald, garnet, amethyst, ruby and diamond within an ornate floral and foliate mount measuring 37 x 26mm, with a glazed locket to the reverse containing hair, and brooch pin fitting. Total weight 6 grams **£500-700**



- 4 A Victorian opal, garnet, diamond, ruby and sapphire set butterfly pendant. The oval cabochon opal measures approximately 12.5mm x 8mm x 3.2mm. The round cabochon garnet measures approximately 6.1mm x 3.3mm. Set with rose-cut diamonds and old-cut rubies and sapphires to the wings, with sapphire-set eyes. The yellow metal is unhallmarked and tests as 14k gold. The length of the pendant is approximately 4cm, with a later added pendant bail which also tests as 14k. Gross weight 12.5g. **£800-1,200**



- 5 A Victorian micromosaic brooch featuring the Doves of Pliny, depicted in coloured tesserae to a black ground, within a yellow metal frame testing as 15ct, measuring 49 x 37mm. Total weight 30.9 grams. **£200-300**



Fine Jewellery, Watches & Silver, 22nd Feb, 2024 09:30

- 6 An Edwardian diamond ring, circa 1909, set with an old cut diamond with an estimated weight of 0.40ct, in a star setting within a diamond shape bezel, between carved scrolling shoulders leading to the shank with hallmarks for 18ct yellow gold and date letter for 1909, ring size N 1/2. Total weight 5.8 grams **£400-600**



- 7 A diamond-set dress ring depicting Krishna and a peacock, the raised figure surrounded by a two-tiered round frame claw-set with brilliant-cut diamonds, to flat shank, yellow metal engraved with Indian assay marks '14K 585', ring head 2.0 cm wide, ring size R, total weight of item 7.0 grams. **£200-300**



- 8 A diamond-set filigree bar brooch featuring thirty-five transitional cut diamonds, the largest measuring approximately 4mm and centrally set in a pierced openwork setting with millegrain detail; the brooch measuring approximately 79mm with a yellow metal pin fitting to the reverse, white metal tested as Platinum and 14ct gold, stamped '14k', 10.6 grams. **£400-600**



- 9 An aquamarine and diamond cocktail ring in 18ct white gold, featuring a cushion mixed-cut aquamarine of light blue colour, approximately measures 9.8 x 9.8 x 7.9 mm, claw-set within a tiered surround set with diamonds, between openwork shoulders with geometric design, to a tapering flat shank, London assay marks and sponsor's mark 'LC', ring head measures 1.4 cm across, ring size O, total weight 6.1 grams. **£400-600**



- 10 A French hair pin, by Boucheron. Set with small rose-cut diamonds to the horseshoe-shaped frame and detachable pin stoppers. Signed 'Fic BOUCHERON' for Frédéric Boucheron to one of the arms. yellow metal is unhallmarked and tests as 18ct gold. The length of the pin is approximately 14cm. Gross weight 22.4g. **£1,500-2,000**



Fine Jewellery, Watches & Silver, 22nd Feb, 2024 09:30

- 11 A 19th century carved coral pendant, depicting a profile portrait of a maiden, bezel set in a later yellow metal woven surround, stamped '750' to the reverse, the pendant and loop together measuring approximately 50mm long; 11 grams **£300-500**



- 12 A sapphire and diamond necklace in 18ct yellow gold, set with pear-shaped blue sapphires interspersed with round brilliant diamonds, to a Boston link chain, with a concealed push clasp and safety catch to the reverse, hallmarked 18ct gold with Sheffield import marks, 1986; measuring 42mm, 16.2 grams. **£700-900**



- 13 A gem-set floral cluster ring, the centrally set garnet topped doublet surrounded by twelve round brilliant diamonds, with ruby set shoulders, in a yellow metal mount stamped '18K', size O1/2; 6.2 grams **£300-500**



- 14 A diamond-set toi et moi ring, each round brilliant diamond claw set in a white metal setting, with an estimated total carat weight of 0.50ct, to a yellow metal D-shaped shank stamped '18ct', size N, 3.6 grams **£200-300**



- 15 A sapphire and diamond entourage ring, centred with an oval-cut sapphire of dark greenish-blue colour, approximately measures 9.9 x 7.5 x 4.3 mm, in a collet within a scalloped surround set with twelve single-cut diamonds, with an estimated total weight of 0.35ct, between fleur-de-lis shoulders, white metal stamped '18ct', ring head measures 1.8 x 1.4 cm, ring size R, total weight of item 6.3 grams. **£300-500**



Fine Jewellery, Watches & Silver, 22nd Feb, 2024 09:30

- 16 A collection of four seals, including a carved agate fob seal with the 'Gray' clan family motto 'Anchor fast anchor' with initials CG, an early 19th-century gold plated bloodstone fob seal, a carnelian fob seal engraved with initials 'JI', and a carved carnelian desk seal measuring 65mm high; Total combined weight 58.5g (4) **£200-300**



- 17 A diamond five stone half hoop ring, set with a graduated row of old cut diamonds with a total estimated weight of 1.50ct, mounted in white metal testing as 18ct, ring size N. Total weight 3.1 grams **£800-1,200**



- 18 A rubellite and diamond ring, the oval rubellite centrally set in a four claw mount on a ribbed gallery setting, to plain shank in 18ct white gold, ring size N, weighs 6.11 grams. **£300-400**



- 19 A sapphire and diamond floral brooch designed as a wreath of foliage and berries, in white and yellow metal testing as 18ct, measuring 36 x 34mm, total weight 13.8 grams. **£500-700**



Fine Jewellery, Watches & Silver, 22nd Feb, 2024 09:30

- 20 An onyx and diamond set necklace, bangle, ring and earring suite. The necklace is set with an onyx disc measuring 3cm in diameter, and set with approximately 0.20cts of round-brilliant cut pavé set diamonds. The flat curb link chain is approximately 32cm in length and terminates with a lobster clasp. Stamped 750 to the reverse of the disc. The hinged bangle is set with four onyx semi-circles, with a central cluster of pavé set diamonds weighing approximately 0.18cts in total. Stamped 750 to the inside of the open box clasp. The diameter of the bangle is 6cm. The cocktail ring is set with onyx in a high bombé style dome with a central cluster of round brilliant cut diamonds weighing approximately 0.35cts in total. Stamped 750 to the reserve, the shank is comprised of three layers. Ring size L. The clip-on earrings are set with an onyx rectangular plaque measuring 17mm x 8mm with a double panel of round brilliant diamonds weighing approximately 0.15cts in total to the centre. Stamped 18k to the bottom of the clip fastening. The gross weight of the suite is 110g (4). **£3,000-5,000**



- 21 A diamond-set link bracelet in 18ct yellow gold, of floral design, comprising double rows of articulated quatrefoil links set with brilliant-cut diamonds throughout, finished with a concealed tongue clasp and secured with two figure-of-eight safety catches, British import marks for 18ct gold, 1998, overall length 18.2 cm, 1.8 cm wide, total weight of item 26.9 grams. **£1,000-1,500**



- 22 A diamond line bracelet of zig-zag design, a series of articulated link pavé-set with 128 brilliant-cut diamonds in total, with an estimated weight of 1.02ct, to a concealed tongue clasp and safety catch, white metal struck with Italian assay marks 750 and maker's mark for Salvatore Arzani, overall length 19.3 cm, total weight 11.0 grams. **£1,000-1,500**



- 23 A twisted roped lariat necklace in 9ct gold, featuring an intertwined yellow gold twisted rope chain and a fine white gold box link chain, terminated with tassels, clasp and tassel caps in Florentine finish, London import marks 375, 1977, overall length 107.0 cm, total weight 71.9 grams. **£1,000-1,500**



Fine Jewellery, Watches & Silver, 22nd Feb, 2024 09:30

- 24 A diamond-set fringe pendant necklace, the snake chain suspending seven graduated drops with diamond accents of approximately 0.21cts in total, each of which is stamped "18k 750", as is the lobster clasp on the chain, length of chain 39cm, gross weight 9.8g. **£400-600**



- 25 A scarab link bracelet set with multi-gemstones, including tiger's eye, chalcedony, rhodonite, moonstone and bloodstone, carved oval cabochons in openwork links connected with a spring-ring clasp, yellow metal marked '14K', overall length 19.0 cm, total weight of item 23.9 grams. **£300-500**



- 26 An oval hinged bangle, bezel set with a cabochon goldstone measuring approximately 16mm x 11mm, in a pierced yellow metal mount stamped '18K'; the inner diameter measuring approximately 60mm, with a concealed box clasp; 33 grams **£800-1,200**



- 27 An Edwardian aquamarine and seed pearl bracelet, composed of six circular cut aquamarine in collet mounts interspaced between open work elongated oval panels each set to the centre with a single seed pearl. To a concealed push button clasp. Stamped '15ct' 128.5 cm long. 7.28 grams **£200-300**



- 28 A cushion-shaped link diamond set bracelet, in white and yellow metal, stamped '925 & 750' respectively indicating silver and 18ct yellow gold, each link is set with pave set round brilliant cut diamonds with an estimated diamond weight of 1.15ct, measuring 17.0 cm in length, total weight of item: 42.79g.
Two stones missing **£300-400**



Fine Jewellery, Watches & Silver, 22nd Feb, 2024 09:30

- 29 A sapphire and rose cut diamond cluster bar brooch, the central sapphire measuring 6 x 4.2mm, surrounded by rose cut diamonds and sapphires, the brooch measuring 60mm in length x 15mm, testing as 18ct gold with brooch pin marked '750'. Total weight 6.8 grams **£200-300**



- 30 A diamond three-stone ring. Set with round brilliant-cut diamonds, the principal diamond measures approximately 0.33cts, and each of the side stones weigh approximately 0.20cts. Set with round-brilliant cut diamonds to the shoulders which weigh approximately 0.20cts in total. Stamped 750 to the inside of the white metal band, ring size Q, gross weight 3.38g. **£200-300**



- 31 A sapphire and diamond set drop pendant. The pear-shaped diamond weighs 0.43cts, suspended by four round brilliant cut diamonds weighing 0.15cts in total. The diamonds are all G colour, SI1 clarity. The length of the yellow metal fine chain is approximately 44cm. Stamped 750 to the reverse of the pendant and on the lobster clasp of the chain. Gross weight 3.4g. **£250-350**



- 32 A Tiffany & Co. diamond solitaire ring, set with a round brilliant cut diamond with an estimated weight of 0.85ct, in a claw setting to tapered shoulders and a plain shank, signed 'Tiffany & Co.' marked 'PT950' with serial number 27206743, ring size O. Total weight 5.9 grams **£800-1,200**



- 33 A pink sapphire and diamond cluster ring, set with a central cushion shape pink sapphire measuring 6.1 x 5.3 x 3.6mm, encircled by round brilliant cut diamonds, with diamond set foliate shoulders, yellow metal marked 'K18', ring size O 1/2, total weight 3.5 grams. **£500-800**



Fine Jewellery, Watches & Silver, 22nd Feb, 2024 09:30

- 34 A small collection of lapis lazuli jewellery items; including a pair of lapis lazuli cabochon and rose-cut diamond halo cufflinks, set in unmarked white metal testing 14ct, in a Christopher Sewell fitted case; a bracelet with carved lapis lazuli arch links, flanking beads to a box clasp pierced with the Chinese character for prosperity, yellow metal marked '585', 18.0 cm long; together with a beaded lapis lazuli bib necklace with gilt spacers, 40.5 cm in length. (3) **£400-600**



- 35 An amethyst dress ring in 18ct white gold, the polished amethyst set in a closed-back integrated D-section shank, London hallmarked '750' with maker's mark 'SI', 1999, size M, total weight of item 7.5 grams. **£200-300**



- 36 A wire necklace in yellow metal marked '9ct', slightly shaped to sit around the neck, each end hooked to form the clasp. Total weight 15.1 grams **£200-300**



- 37 An emerald and diamond cluster ring, set with a central oval emerald measuring 7.6 x 5.4 x 3.6mm, encircled by two rows of round brilliant cut diamonds, to diamond set shoulders leading to the shank with hallmarks for 18ct white gold, ring size M 1/2. Total weight 5.3 grams **£500-700**



- 38 An Albert chain suspending a propelling pencil, comprising a series of Fetter links, connected with a T-bar and terminated with a swivel clasp and a spring-ring clasp, suspending a propelling pencil where the barrel has been engraved with scrollwork design, chain marked '15', no other marks on the pencil, overall length 36.5 cm, weighable 22.4 grams. **£500-700**



Fine Jewellery, Watches & Silver, 22nd Feb, 2024 09:30

- 39 A pair of reconstituted turquoise pendant earrings; the oblique triangular drops set with reconstituted turquoise panels within pinched frames and an outer polished band, fitted with ear wires, yellow metal stamped '750', drop length 6.0 cm, total weight of item 13.66 grams. **£200-300**



- 40 An emerald, diamond and sapphire cocktail ring, the lozenge-shaped ring head centred with a large elongated emerald cabochon in collet, approximately measuring 18.6 x 11.6 x 7.1 mm, set within a frame of single-cut diamonds with circular-cut sapphire highlights, to a gallery and shoulders engraved with scrollwork details, unmarked yellow metal testing 14ct, ring head measuring 3.4 x 2.7 cm, ring size (with sizing guard) N½, total weight of item 10.4 grams. **£600-800**



- 41 A turquoise-set fringe necklace, the front suspending nine foliate engraved panels of shaped rectangular form, interspaced with eight oval cabochon beads, to a snake link chain, yellow metal marked '585', overall 45.0 cm in length, total weight of item 21.83 grams. **£500-700**



- 42 A wedding band in 22ct yellow gold, in a wide plain shank, London hallmarked 1968, size Q, width 9.2 mm, total weight 8.6 grams. **£350-450**



- 43 A cat's eye chrysoberyl and diamond dress ring. The cabochon chrysoberyl measures approximately 7.3mm x 5.2mm x 4.1mm. The surrounding round-brilliant cut diamonds weigh approximately 0.84cts in total. The plain yellow gold band is stamped 18k to the inside. Ring size N. Gross weight 4.8g. **£250-350**



Fine Jewellery, Watches & Silver, 22nd Feb, 2024 09:30

- 44 A pair of diamond set drop earrings. The leaf design earrings are set with 0.69cts of pavé set around brilliant diamonds. The length of each earring is approximately 2.5cm. Stamped 18k to the reverse and fitted with shepherd's hooks. Gross weight 3.3g. **£400-600**



- 45 A Mikimoto cultured pearl bracelet and a necklace; the bracelet comprising a single strand of round cultured pearls in uniform size 5.5 mm, flanked by foliate spacers, to a box clasp, white metal struck with Mikimoto maker's mark and 'S', overall length 20.0 cm; together with a single-row cultured pearl necklace, with cream coloured round pearls of 6.0 - 6.5 mm, hand-knotted to a fish hook clasp, white metal marked 'silver', overall length 44.5 cm; Both cased in Mikimoto boxes, total weight of items 32.2 grams. (2) **£250-350**



- 46 Bulgari - an 18ct rose gold and ceramic B Zero ring. The four-band ring is set with a black ceramic spiral. Hallmarked for 18ct gold, with Serial number RS13756 inscribed inside the band. Size 53 is also stamped on the inside of the ring. UK ring size M1/2. Gross weight 10.1g. **£400-600**



- 47 A diamond-set double-leaf necklace, each leaf featuring approximately thirty single-cut diamonds, in a white metal setting, stamped '750' to the reverse, to a yellow metal necklace with articulated links, tested as 18ct gold, 27 grams **£1,200-1,800**



- 48 A diamond and enamel tortoise brooch with emerald eyes, the head and tail articulated to provide movement, with blue and green enamel to the shell, the head, tail and feet set with round brilliant cut diamonds, with a total estimated diamond weight of 1.20ct, the brooch measuring 57 x 32mm, testing as 18ct gold and platinum, with brooch pin fitting to the reverse. Total weight 26.3 grams **£1,000-1,500**



Fine Jewellery, Watches & Silver, 22nd Feb, 2024 09:30

- 49 Bulgari - an 18ct white gold and diamond set pendant and chain. The circular Bulgari pendant is set with a single round-brilliant cut diamond weighing approximately 0.10cts, and suspended from a pavé diamond set pendant bail. The fancy link chain is set with Bulgari circular motif spacers and terminates with a lobster clasp. Length of chain 56cm. The diameter of the pendant is 3.5cm Both the pendant and chain are hallmarked for 18ct gold. Gross weight 36g. **£2,000-4,000**



- 50 A diamond set cross pendant and chain, by Elsa Peretti for Tiffany & Co. Set with 0.20cts of round brilliant-cut diamonds, suspending on a fine link chain and terminating with a lobster clasp. Signed "PERETTI" and "TIFFANY&CO" with hallmarks for 18ct gold. Pendant length 1.5cm, chain 40.5 cm long. Gross weight 4.4g. **£300-500**



- 51 A Fabergé heritage yellow gold diamond & guilloché enamel Cathedral surprise pendant, featuring green enamel with sunk set diamonds in an egg shape with a hinged mechanism revealing a cathedral miniature all on an 18ct gold chain with lobster clasp, chain length 50cm, total weight of item: 16.96g With certificate of authenticity and box. **£3,500-4,000**



- 52 A sapphire and diamond dress ring, the emerald cut sapphire measuring 9.3 x 7.6 x 4.2mm, within three rows of tapered baguette cut diamonds, to a wide shank marked '750 18K', ring size N. Total weight 8.4 grams **£2,500-3,500**



- 53 A Fabergé blue john egg pendant, the cabochon cut gemstones set in 18ct white gold and featuring a row of claw set round brilliant diamonds, to a diamond set pendant loop, on an 18ct white gold chain measuring approximately 45cm, with maker's marks; never worn with original box and certificate of authenticity; 8.0grams **£1,200-1,800**



Fine Jewellery, Watches & Silver, 22nd Feb, 2024 09:30

- 54 A pearl-set vine brooch in 9ct gold, featuring round cultured pearls in mount realistically modelled after a bunch of grapes and textured vine leaves, brooch fittings to verso, London 1964, measuring 5.1 x 3.2 cm, total weight of item 9.9 grams. **£150-200**



- 55 A ruby and diamond necklace; the centre set with foliate sprays of round brilliant cut diamonds and mixed cut rubies, stamped '18k' to spray, with an associated bead chain stamped '750'. Overall length 47.7 cm, gross weight 14.49 grams. **£700-1,000**



- 56 A 9-carat rose gold curb pattern bracelet with a later padlock clasp. Engraved and polished links, each marked '9c'. 7.25 grams **£200-300**



- 57 A wedding band in 22ct yellow gold, in a D-section shank, London hallmarked with maker's mark for William Wilkinson, 1910, size P, total weight 8.4 grams. **£350-450**



- 58 A single diamond set earring conversion, featuring rub-over set round brilliant cut diamonds with the largest stones measuring approximately 5.0mm set in a cluster style with a foliate diamond set top section and large shepherd's hook all on yellow metal that tests as 18ct gold, total weight of items: 6.62g **£300-500**



Fine Jewellery, Watches & Silver, 22nd Feb, 2024 09:30

- 59 A star sapphire halo pendant; comprising a pale sapphire oval cabochon measures 16.6 x 14.0 x 5.5 mm, set in rub-over mount above a border of twenty circular cut sapphires; white metal marked '585' and tests as 14 carat gold, overall measures 2.6 x 2.4 cm, total weight of item 11.6 grams. **£200-300**



- 60 A moonstone and seed pearl swallow bangle, set with a heart-shaped moonstone to the centre between swallows set with seed pearls, the hinged bangle with an inner diameter of 5.6cm, unmarked, with safety chain. Total weight 6.5 grams **£500-700**



- 61 An emerald and diamond floral cluster ring, featuring three round brilliant diamonds offset with marquise shaped emeralds in petal like formations, claw set in a yellow metal mount with a D-shaped shank stamped '18K' and '750'; size L 3/4, 7.5 grams **£300-500**



- 62 A diamond half-eternity ring in 18ct yellow gold, channel-set with fourteen round brilliant-cut diamonds, with an estimated total weight of 1.68ct, laser engraved with London assay marks for 18ct gold, ring size O 1/2, total weight 5.4 grams. **£500-700**



- 63 A sapphire and diamond set dress ring, the five graduated oval blue sapphires centrally set within a diamond set surround, the gallery leading to a D-shape shank in white metal stamped '18ct', size Q 1/2, 5.4 grams **£200-300**



Fine Jewellery, Watches & Silver, 22nd Feb, 2024 09:30

- 64 A channel set diamond ring, the row of nine brilliant cut diamonds centrally set, in a white metal mount with angled shoulders, tapering down to a flat shank stamped '750' with maker's mark 'Mosso Baussi', size M1/2, 9.7 grams **£500-700**



- 65 A single stone aquamarine pendant; the cushion-cut aquamarine measures 18.5 x 15 x 11 mm and is estimated to be in excess of 17 carats, in four claw mount to a three row gallery setting with conforming ribbed bale, yellow metal tests as 14 carat gold, drop length 3.0 cm, total weight of item 7.7 grams. **£300-500**



- 66 An emerald and diamond trilogy ring in 18ct white gold, centred with an oval-cut emerald of light bluish-green, approximately measures 5.8 x 3.9 mm, flanked by two brilliant-cut diamonds with a total estimated weight of 0.30ct, London assay marks and maker's mark 'ATLd', ring size O½, 4.0 grams. **£300-500**



- 67 An emerald and diamond cluster pendant on chain, the treated oval emerald is claw set within a surround set with ten round brilliant diamonds, attached to a flared top loop on a flat curb link chain with bolt ring, British assay marks for 18ct yellow gold, length of chain 44cm, total weight of item: 4.47g. **£400-600**



- 68 A pearl and diamond dress ring, by Mikimoto. The floral design band is set with approximately 0.06cts of round-brilliant cut diamonds. The pearl measures approximately 7mm and has a slight pinkish hue. Hallmarked for 18cts gold, ring size M. Gross weight 4.9g. With a fitted Mikimoto box. **£400-600**



Fine Jewellery, Watches & Silver, 22nd Feb, 2024 09:30

- 69 A pink sapphire and diamond floral cluster crossover ring. Each cluster comprises approximately 0.35cts of round brilliant cut stones. The white gold band is hallmarked for 18ct gold. Ring size O. Gross weight 5.8g. **£200-300**



- 70 An Edwardian diamond-set daisy head ring, the central old-cut diamond surrounded by eight smaller old-cut diamonds, bezel set in a white metal head tested as silver, to a yellow metal shank stamped '18ct', size O1/2; 1.6 grams **£200-300**



- 71 A diamond set cluster ring. The tiered plaque is set centrally with various coloured round-brilliant diamonds weighing approximately 2cts in total within a floral motif. The remaining pavé set diamonds weigh approximately 0.45cts in total. The plain white gold band is stamped 18k to the inside. Ring size K1/2. Gross weight 10.1g. **£800-1,200**



- 72 A dress ring set with an American one dollar coin, the square ring head engraved with laurel decoration and further embellished with single-cut diamonds at the corners, to a tapering flat shank, yellow metal struck '9ct', ring head measures 2.2 x 2.0 cm, ring size P, total weight 28.7 grams. **£500-700**



- 73 A tanzanite and diamond cluster ring, the oval mixed cut tanzanite measuring 9mm x 7mm and surrounded by six round brilliant diamonds, each diamond measuring approximately 3.5mm with a total estimated carat weight of 1.02ct, in a yellow and white metal coronet setting leading to a cathedral shank in yellow metal tested as 18ct gold, size L, 8.5 grams. **£600-800**



Fine Jewellery, Watches & Silver, 22nd Feb, 2024 09:30

- 74 A long guard chain terminated with two swivel clasps, unmarked metal testing as 9ct, measuring 127.5cm, total weight 34.2 grams. **£500-700**



- 75 A pair of sapphire and diamond cufflinks, each rectangular panels set with a diagonal row of three baguette cut sapphires to a mesh background within a frame set with diamonds to opposite corners, measuring 20 x 14mm, in white and yellow gold with import marks for 18ct. Total combined weight 18.9 grams **£700-1,000**



- 76 A ruby and diamond pendant on chain, of abstract geometric design, comprising five oval-cut rubies interspersed with single-cut diamonds, on a fine box link chain, pendant mount stamped '750', chain struck with London hallmarks for 18ct gold, 44.0 cm long, total weight of item 10.0 grams. **£200-300**



- 77 A diamond-set curb link ring in 18ct two-tone gold, composed of a series of heavy curb links, three of them embellished with diamond highlights, struck with London import marks 750, ring size Q, total weight 12.0 grams. **£300-500**



- 78 A sapphire and diamond pendant, of lozenge-shaped and set with sixteen marquise-cut sapphires and nine brilliant-cut diamond highlights, to a ribbed bail, unmarked white metal, measuring 4.2 cm long excluding bail, total weight of item 9.91 grams. **£200-300**



Fine Jewellery, Watches & Silver, 22nd Feb, 2024 09:30

- 79 A sapphire and diamond dress ring, designed as a graduated row of sapphires between rows of old cut diamonds, with a total estimated diamond weight of 0.70ct, the largest sapphire measuring 5.1 x 4.8 x 3.2mm, between fleur de lis shoulders, leading to the shank with hallmarks for 18ct gold, partially obscured by sizing beads, ring size approx. L. Total weight 7.5 grams **£800-1,200**



- 80 A ruby and diamond line bracelet; composed of ten oval-cut rubies interspaced with eleven round brilliant cut diamonds in claw mounts, to panther link bracelet with box clasp. Marked '585' and tests as 14 ct gold, measuring 19cm in length, total weight of item 9.72 grams. **£300-500**



- 81 A diamond and enamel ring, set to the centre with a rose cut diamond measuring 5.4mm diameter, with scrolling carved openwork shoulders set with diamonds and blue enamel, the shank marked '750' and testing as 18ct, ring size M 1/2. Total weight 4.7 grams. In a rectangular ring box. **£200-300**



- 82 A peridot and pearl bar brooch, set with an octagonal peridot measuring 8 x 8 x 5mm, with four seed pearls set at the cardinal points, to a yellow metal bar brooch measuring 49mm in length and testing as 14ct. Total weight 4.4 grams. With a burgundy fitted case for Carrington & Co. **£200-300**



- 83 A Victorian gem-set ring and an old-cut diamond ring; the diamond and emerald five-stone half hoop ring set with three graduated old-cut diamonds with emeralds flanked between, yellow metal struck with Chester assay marks for 18ct gold, 1897, size O½; together with a dress ring star-set with a single old-cut diamond, unmarked yellow metal testing 18ct, size N; Total weight of items 7.2 grams. (2) **£250-350**



Fine Jewellery, Watches & Silver, 22nd Feb, 2024 09:30

- 84 A three stone emerald and diamond half hoop ring, and a pair of emerald stud earrings en suite; the round brilliant cut diamond in double claw mounts flanked by circular cut emeralds, to a plain shank, ring size S; Gross weight 3.04 grams. (2) **£300-400**



- 85 A pair of diamond set circular stud earrings. The round brilliant cut diamonds weigh 0.39cts in total. H colour, SI1 clarity. Hallmarks for 18ct gold to each post. Gross weight 1.8g. **£300-500**



- 86 A tanzanite and diamond dress ring, the central tanzanite measuring 8 x 5.8 x 3.6mm, within a tiered cluster of baguette cut diamonds, mounted in yellow metal marked '14k' inside the shank, ring size N 1/2. Total weight 6.7 grams **£250-350**



- 87 A collection of jewellery consisting of a telescopic pen cum pencil, a suite of hair jewellery and a star brooch frame. The hexagonal holder is engraved with a delicate floral design, with a floral design slider accessing the pencil, and another floral slider with access to the fountain pen nib. The holder is topped with a foil-backed rock crystal, and stamped 9ct. The star brooch frame is set to a crescent moon with small old-cut diamonds to the star. The metal is unhallmarked, and tests as a 9ct gold. The brooch and earring suite is made of delicate woven hairwork with a central engraved yellow metal panel on the brooch, suspending two gold drops and two woven hairwork panels. The earrings are designed as woven hairwork hoops with a central drop to the top. Metal is unhallmarked on each item but tests as 14ct gold. Gross weight 30g (4). **£250-350**



Fine Jewellery, Watches & Silver, 22nd Feb, 2024 09:30

- 88 A diamond half-eternity ring in 18ct gold, channel-set with thirteen graduated round brilliant-cut diamonds, with an estimated total weight of 2.26ct, laser engraved with London assay marks for 18ct gold, ring size O½, total weight of item 8.9 grams. **£800-1,200**



- 89 A tapered tubogas necklace in white metal stamped '585', measuring approximately 9mm wide to the front and tapering down to a concealed push clasp at the reverse, tested as 14ct gold, measuring 45cm long, 15.7 grams **£300-500**



- 90 A sapphire and diamond halo ring, centred with an oval-cut sapphire of 7.4 x 6.0 mm, in a collet setting within a border of ten round brilliant-cut and two step-cut diamonds, yellow metal shank marked '585', ring head 1.5 x 1.1 cm, ring size P, total weight of item 6.48 grams. **£300-500**



- 91 A cultured pearl link necklace, comprising a row of round cultured pearls in silver colour, with an average diameter of 10.5 mm, connected with segments of flat cable links, completed with a spring-ring clasp, white metal marked 'Au750', overall length 77.0 cm, total weight 53.9 grams. **£200-300**



- 92 A diamond cluster pendant featuring a pear cut diamond measuring approximately 9.5 x 6 x 3.5mm, with an estimated weight of 1.15ct, within a drop shape border set with baguette cut diamonds, suspended from a bail, with a box chain measuring 40cm in length, with import marks for 9ct white gold and marked '9K Italy'. Total combined weight 6.7 grams. **£1,000-1,500**



Fine Jewellery, Watches & Silver, 22nd Feb, 2024 09:30

- 93 A diamond line bracelet, set with a series of round brilliant cut diamonds with a total estimated diamond weight of 12.00ct, measuring 16cm in length, in yellow gold marked '14k'. Total weight 17.3 grams **£5,000-7,000**



- 94 A diamond line necklace set with a single row of round brilliant cut diamonds with a total estimated diamond weight of 6.50ct, in claw settings, with an integral clasp with safety catch, with hallmarks for 18ct white gold, total length 44.5 cm, total weight 38.5 grams. **£2,000-3,000**



- 95 Bulgari - an 18ct white gold B-Zero 1 ring; the three-band ring is set with a sprung spiral, hallmarks for 18ct gold and inscribed with size 58. Initials "FKEFFF" are inscribed inside the band. Ring size Q 1/2. Gross weight 10.3g. **£300-500**



- 96 A pink sapphire and pearl hinged bangle, featuring twenty-six mixed cut pink sapphires centrally set in a domed openwork setting, alongside fifty-two smaller pink sapphires and eighty seed pearls, fastened with a push tongue clasp and safety chain, unmarked yellow metal tested as 18ct gold, inner diameter 5.6cm, 72.7 grams. **£2,500-3,500**



- 97 A Fabergé Whitby jet egg pendant, the cabochon cut gemstones set in 18ct yellow gold and featuring a row of claw set round brilliant diamonds, to a diamond set pendant loop, on an 18ct yellow gold chain measuring approximately 48cm, with maker's marks; never worn with original box and certificate of authenticity; 5.7grams **£1,200-1,800**



Fine Jewellery, Watches & Silver, 22nd Feb, 2024 09:30

- 98 An Ilias Lalaounis pearl and diamond ring, featuring a central cultivated pearl measuring 5.5mm with old cut diamonds set white metal leaves onto a pierced-out domed yellow metal gallery that tests as 18ct yellow gold, ring size L, total weight of item: 7.93g. **£800-1,200**



- 99 An old cut-diamond solitaire ring, the principle diamond approximately weighs 1.50ct with an estimated M colour and I1 clarity, further set with six old-cut diamonds to the shoulders and stamped 'PLAT' to the inside of the band, ring size L, total weight 2.5g. **£2,000-3,000**



- 100 An Ilias Lalaounis necklace and earring suite, the fringe-style necklace comprised of links in the form of stylised lilies, leading to a concealed box clasp stamped '750', together with a matching pair of drop earrings, stamped '750', with post fittings to the reverse and butterfly backs; total weight of items 75.6 grams. (2) **£4,000-6,000**



- 101 An old cut diamond brooch, earring and bracelet suite, set throughout with old cut diamonds in a geometric design with an engraved scrolling border to the sides of each piece, the brooch with a total estimated diamond weight of 5.50ct, measuring 48 x 21mm, the bracelet with a total estimated diamond weight of 5.50ct, measuring 16.5cm in length, the earrings set with a total estimated diamond weight of 0.40ct, each earring measuring 12 x 12mm, with hook and catch fittings. White metal tests as silver. Total combined weight 26.5 grams. (3) **£4,000-6,000**



- 102 An unworn Mikimoto Gold South Sea cultured pearl necklace sunk set with round brilliant cut diamonds, the golden pearls measure 10-12mm and alternate between gold nuggets on-chain set with diamonds. Total weight of item: 37.68g With box and warranty card.
RRP: £13,000 **£3,500-4,000**



Fine Jewellery, Watches & Silver, 22nd Feb, 2024 09:30

- 103 A diamond eternity ring set with round brilliant cut diamonds with a total estimated diamond weight of 5.00ct, in claw settings, mounted in white metal testing as platinum, ring size R. Total weight 5.9 grams **£1,000-1,500**



- 104 A diamond three-stone ring, set with a row of three old-cut diamonds with a total estimated weight of 0.65ct, in claw settings to tapered shoulders leading to the D-section shank marked 'platinum', ring size P. Total weight 2.3 grams **£250-350**



- 105 An amethyst and diamond set cluster ring. The oval-cut amethyst measures approximately 13.2mm x 10.5mm x 7.2mm. Surrounded by 0.55cts of round-brilliant cut diamonds. Set to a textured circular ring shank with hallmarks for 18ct gold. Ring size N 1/2. Gross weight 10.2g. **£350-450**



- 106 A garnet pendant/brooch, set with a central rose cut garnet within a scrolling floral and foliate mount with pendant drop below, measuring 49 x 37mm, with marks for 15ct gold, with both pendant bail and brooch pin fitting. Total weight 8.3 grams **£200-300**



- 107 A five stone pearl half hoop ring, the slightly graduated cultured pearls in coronet settings to carved shoulders and a plain shank. Unmarked, tests as 18ct gold. Ring size O, 3.54 grams **£200-300**



Fine Jewellery, Watches & Silver, 22nd Feb, 2024 09:30

- 108 A 9ct yellow gold Birchfield Harriers commemorative medal fob, with enamel work depicting a running deer over the motto 'Fleet and Free', hallmarked 9ct gold, Birmingham, 1903; together with an unmarked yellow metal rope chain tested as 18ct gold; 27.8 grams **£300-500**



- 109 A pair of diamond stud earrings, each earring set with a round brilliant cut diamond, the pair with a total estimated diamond weight of 0.30ct, in claw settings to post fittings. Total weight 0.8 grams **£200-300**



- 110 A sapphire and diamond cluster ring, the central blue sapphire measuring approximately 8.2mm x 6.7mm and surrounded by fourteen single cut diamonds, claw set in a bi-colour mount, with a yellow metal D-shape shank stamped '18ct', size Q, 3.3 grams
Together with a Gem & Pearl Laboratory report stating the sapphire shows no signs of heat treatment, Sri Lankan origin, 2.56ct **£800-1,200**



- 111 A multi-colour sapphire set half hoop eternity ring. Set with nine vari colour channel set sapphires within a white gold setting. Stamped 750 to the inside of the band. Ring size O 1/2, gross weight 6.33g **£400-600**



- 112 A diamond pendant with a stylised linear floral and foliate design, featuring a floral cluster set with round brilliant cut diamonds, with further diamonds set to the leaf shape below, with a total estimated diamond weight of 2.00ct, the pendant in white and yellow metal to a diamond set bail, measuring 56 x 18mm including bail, with a box link chain measuring 40.5cm, with import marks for 18ct white gold. Total weight 10.8 grams. **£400-600**



Fine Jewellery, Watches & Silver, 22nd Feb, 2024 09:30

- 113 Two hinged bracelets in 9ct gold; including a Victorian hinged bracelet, constructed with two flat hollow halves, with one half engraved with elaborated scrollwork design, completed with a concealed tongue clasp with grooved push thumbpiece, Birmingham 1891, inner diameter 6.0 cm; together with another Edwardian hinged bracelet featuring an openwork motif set with split pearls and amethyst to a knife-edged band, Birmingham 1913, inner diameter 6.3 cm; Total weight of items 15.5 grams. (2) **£250-350**



- 114 A sapphire and diamond ring; the oval cabochon sapphire approximately measures 13.2 x 10.5 x 5.2 mm, in a stylised foliate mount set with six round brilliant cut diamonds and two marquise cut diamonds, to bifurcated shoulders; the plain shank stamped '750' and tests as 18 carat gold, ring size P, total weight of item 9.29 grams. **£300-500**



- 115 A single-row cultured pearl necklace, retailed by Lane Crawford for Mikimoto. The uniform-size pearls each measure 7.6mm and terminate with a diamond and pearl set clasp which is stamped 14 to the reverse. Diamonds weigh approximately 0.12cts in total. Length of clasp 1.5cm, length of necklace 60cm. Gross weight 48g. With a signed pouch and associated paperwork. **£400-600**



- 116 A sapphire and diamond cluster ring, the dark blue oval sapphire measures approximately 7mm x 5mm and is surrounded by sixteen round brilliant diamonds, with an additional sixteen round brilliant diamonds set in the shoulders, to an 18ct white gold mount, size N 3/4; 3.6 grams **£200-300**



- 117 A diamond floral cluster ring set with three clusters of round brilliant cut diamonds with a total estimated weight of 0.45ct, in a crossover design, marked '750' to the shank, ring size L 1/2. Total weight 4.5 grams **£200-300**



Fine Jewellery, Watches & Silver, 22nd Feb, 2024 09:30

- 118 A cabochon ruby and diamond cluster ring; the central, circular ruby in collet mount above a border of mixed old cut diamonds and an outer band of circular-cut rubies; to bifurcated reeded shoulders and a reeded shank, with a later ring sizer. Any marks obscured by the inner band. Metal tested as 14ct gold, adapted ring size M, gross weight 9.93 grams. **£200-300**



- 119 A diamond-set toi et moi ring, featuring two old cut diamonds with an estimated total carat weight of 0.34ct, each set in bi-colour metal bezels, to a tapered yellow metal D-shape shank stamped 'PLAT' and '18ct', size M3/4, 1.9grams **£400-600**



- 120 An 18ct yellow gold stretch bracelet by Chimento, with oval curved links, stamped '750' to the reverse together with maker's marks and Italian hallmarks; featuring a titanium spring for adjustable sizes; never worn with original tags and box; 7.6 grams **£250-350**



- 121 A diamond five-stone diamond ring in 18ct gold, set with a row of graduated old-cut diamonds with a total estimated weight of 0.97ct, to a carved scrolling gallery, shank struck with London hallmarks for 1985, ring size J, total weight of item 3.3 grams. **£500-700**



- 122 A diamond-set ankh pendant, pavé-set with brilliant-cut diamonds with an estimated total weight of 2.37ct, on a loop bail, white metal marked '585/14K', drop length 5.3 cm, total weight of item 8.9 grams. **£400-600**



Fine Jewellery, Watches & Silver, 22nd Feb, 2024 09:30

- 123 An Art Deco style diamond and sapphire filigree brooch, featuring a transitional cut diamond measuring approximately 5.5mm in a hexagon-shaped setting, flanked by six square-cut sapphires in a white metal setting with millegrain details; the brooch measuring approximately 44mm x 20mm, stamped '14K & Plat', 4.8 grams. **£500-700**



- 124 A serpent bracelet and necklace suite. The coiled snake bracelet is coiled around an internal steel spring; to a plain tapering tail and engraved head set with rubies, with hallmarks for Chester 9ct gold, 1960; The articulated necklace terminates to a plain tapering tail and engraved head set with ruby eyes. Hallmarks for Birmingham 9ct gold; Total weight of both items 71g. (2) **£1,200-1,800**



- 125 A sapphire and diamond dress ring, the tabular-shaped head set with a central sapphire cabochon surrounded by old-cut diamonds, to a yellow metal shank with floral and scrolling engraving, tested as 18ct gold, size M; 7.0 grams **£250-350**



- 126 Tiffany & Co. - a 'New York Notes' pendant in 18ct yellow gold, the curved circular pendant engraved with the brand's New York landmark address, London hallmarked with maker's mark, 2010, pendant measures 2.5 cm across, total weight 9.7 grams.

No box no papers. **£600-800**



- 127 A diamond set eternity ring. Set with round brilliant-cut diamonds that weigh approximately 0.84cts. Set in un-hallmarked white metal, and tested as 18ct gold. Ring size N, Gross weight 2.9g **£300-500**



Fine Jewellery, Watches & Silver, 22nd Feb, 2024 09:30

- 128 A diamond-set heart pendant, with approximately fifty single-cut diamonds, pavé-set in an 18ct bi-colour gold mount, to a yellow metal foxtail chain stamped '750', pendant measuring approximately 58mm, 8.3 grams **£300-500**
- 129 A jade cabochon dress ring, the central oval cabochon jade measuring 16.7 x 11.1mm, encircled by two carved crocodiles with ruby set eyes, stamped 14k to the inside of the shank, ring size P. Total weight 15.3 grams **£400-600**
- 130 An opal and diamond-set three stone ring, the oval cabochon opals are slightly graduated with the principle opal measuring 8.3mm x 6.5mm x 2.7mm, and the outer cabochon opals measuring approximately 7.3mm x 5.6mm x 2.5mm each, the opals are in a collet setting punctuated with four old cut diamonds, the inside of the ring has partially rubbed hallmarks for 18ct gold, ring size P, gross weight 7g. **£400-600**
- 131 A ruby, emerald and diamond butterfly brooch cum pendant; the thorax set with round brilliant cut diamonds, the wings with claw mounted marquise cut emeralds and rubies, brooch fittings and two loop bails on top, unmarked yellow metal testing 18ct. 6cm width, 20.28 grams. **£500-700**
- 132 A diamond solitaire ring, set with a round brilliant cut diamond with an estimated weight of 0.40ct, in an illusion setting in white metal, to a yellow metal shank with hallmarks for 18ct, ring size M. Total weight 5.1 grams **£250-350**



Fine Jewellery, Watches & Silver, 22nd Feb, 2024 09:30

- 133 A diamond-set dress ring, the round brilliant and baguette cut diamonds arranged in a rectangular cluster, in a white metal setting with a yellow metal surround, to a yellow metal knife-edge shank tested as 18ct gold, maker's mark 'MM', size P, 5.6 grams **£500-800**



- 134 An aquamarine and diamond set half-hoop eternity ring. Set with four-round brilliant aquamarines and three-round brilliant diamonds. Each stone is approximately 0.15cts. Hallmarks for 18ct gold to the inside of the band. Ring size N. Gross weight 3.7g. **£400-600**



- 135 An amethyst dress ring and a citrine dress ring; the oval-cut amethyst measures 14.6 x 10.3 x 7.1 mm in 9ct gold four claws setting, London 1966, size O; the octagonal-cut citrine measures 14.7 x 11.4 x 7.8 mm, in claw setting to grooved shank, yellow metal marked '18ct', size L; Total weight of items 9.8 grams. (2) **£200-300**



- 136 An American gem-set fraternity ring, of geometrical design, centred with a rectangular table-cut synthetic ruby flanked by two diamond-set engraved panels, on a foliate embellished gallery and shoulders with applied motifs representing law and justice, unmarked bi-coloured metal testing 14ct, size P, total weight 10.4 grams. **£300-400**



- 137 A diamond solitaire ring in 18ct white gold, featuring a round brilliant-cut diamond with a translucent hazy appearance, approximately measures 7.0 mm in diameter with an estimated weight of 1.25ct, in six claw setting between tapered shoulders, shank struck with Sheffield assay marks '750', ring size N, total weight 3.9 grams. **£800-1,200**



Fine Jewellery, Watches & Silver, 22nd Feb, 2024 09:30

- 138 A peridot and diamond dress ring in 18ct yellow gold, the central princess cut peridot of 9.0 mm, claw mounted above two rows of brilliant cut diamonds; to a tapered flat shank, ring head 2.0 cm wide, ring size P, weighs 10.49 grams. **£200-300**



- 139 A yellow metal bar link bracelet, stamped '9ct' to the reverse with maker's marks 'W.J.S', each link engraved with linear and ridged style patterns; measuring approximately 18cm long, with two additional spare links; 13.0 grams **£150-250**



- 140 A sapphire and diamond three-stone ring. The oval cut sapphire measures 7.5mm x 5.9mm x 4.8mm. The two side diamonds weigh approximately 0.40cts each, graded as I colour, SI1 clarity. With pavé set round brilliant cut diamonds to the shoulders. Hallmarks to the inside of the band for platinum. Ring size O. Gross weight 5.5g. **£200-300**



- 141 A Victorian diamond and pearl cluster ring, circa 1892, set with a central half pearl surrounded by old cut diamonds, with a total estimated diamond weight of 0.25ct, with scrolling shoulders leading to the shank with English hallmarks for 18ct gold and partial date letter for 1892 (slightly obscured due to previous resizing) ring size O 1/2. Total weight 3.3 grams **£200-400**



- 142 A 19th-century necklace set with rose-cut diamonds, comprising a series of graduating rectangular links with floral design, pinch-collet set with rose-cut diamonds in closed back mounts, flanking openwork diamond links in between, to a concealed tongue clasp, unmarked metal testing as silver, overall length 45.0 cm, total weight of item 65.5 grams. **£2,500-3,500**



Fine Jewellery, Watches & Silver, 22nd Feb, 2024 09:30

- 143 Catherine Best of Guernsey - a seaweed-inspired necklace, bracelet and earring suite, set in 18ct white gold; the necklace measuring approximately 39cm and the bracelet measuring approximately 18cm; stamped '750' or '18ct', together with maker's certificates of authenticity; 79 grams (3) **£2,500-3,500**



- 144 A diamond line bracelet, containing a row of 45 round brilliant-cut yellow-tinted diamonds in articulated links, with an estimated total weight of 11.25ct, completed with a concealed tongue clasp and lever safety catch, white metal marked '18k', overall length 18.0 cm, total weight of item 18.2 grams. **£2,000-3,000**



- 145 Cartier - a diamond-set 'Mimi' ring in 18ct yellow gold, centred with an oval-cut diamond in collet, approximately weighs 0.27ct, half of the tapered D-section band has been pavé-set with three rows of brilliant-cut diamonds, signed and numbered, Swiss conventional marks 750, maker's mark for Serge Boudier, ring size O (official size 54), total weight 4.9 grams. **£3,500-4,500**



- 146 Tiffany & Co. - a 'Metro' diamond-set ring, half of the wide band has been pavé-set with five rows of brilliant-cut diamonds, with an estimated total weight of 0.55ct, white metal shank signed and marked '750 Belgium', measures 6.4 mm wide, size P, total weight 9.9 grams. **£2,500-3,000**



- 147 De Beers - a diamond-set dress ring in 18ct yellow gold, the wide flat band has flush-set with 26 round brilliant cut diamonds in various sizes, and another one on the inside of the shank, signed and engraved with Birmingham assay marks, along with a serial number, band measures 9.0 mm wide, ring size M, total weight 15.7 grams. **£1,500-2,500**



Fine Jewellery, Watches & Silver, 22nd Feb, 2024 09:30

- 148 Tiffany & Co - an Elsa Peretti open heart pendant in 18ct yellow gold, with maker's marks, hallmarked 18ct gold, London, 2015; 5.4 grams **£200-300**



- 149 A diamond cluster ring featuring an array of old cut diamonds with a total estimated diamond weight of 2.00cts, in cut down settings, to carved floral shoulders leading down to the D-section shank, testing as 18ct, the settings testing as platinum, ring head measures 15.2 mm in diameter, ring size U, total weight 10.4 grams. **£1,000-1,500**



- 150 A link bracelet and matching earrings set with diamonds and onyx; the bracelet alternating with onyx rings and annular motifs pavé-set with diamonds, to a spring-ring clasp and heart charm, overall length 21.0 cm; together with a pair of matching drop earrings fitted with posts and butterflies, drop length 4.0 cm; white metal struck with Italian assay mark '750' and maker's mark for Hasbani, total weight of items 26.3 grams. (2) **£1,000-1,500**



- 151 A figaro link chain, comprising a series of flat fancy links and terminates with a lobster clasp, yellow metal stamped "14k ITALY", measures 60.2cm in length, total weight 16g. **£300-500**



- 152 A tanzanite and diamond set cluster ring. The oval-cut tanzanite measures approximately 11.5mm x 10mm x 6.5mm, surrounded by a double row of round-brilliant diamonds weighing approximately 1.44cts in total. The plain yellow gold band is stamped 18K to the inside, ring size P. Gross weight 11.3g. **£350-450**



Fine Jewellery, Watches & Silver, 22nd Feb, 2024 09:30

- 153 A diamond three-row half hoop ring in 18ct white gold, channel-set with thirty-three princess-cut diamonds with an estimated total weight of 0.95ct, to a tapered flat shank, struck with British assay marks for 18ct gold, size N, total weight of item 6.8 grams. **£600-800**



- 154 A diamond solitaire ring, the round brilliant diamond measuring approximately 4.1mm with an estimated carat weight of 0.25ct, set with four double-claw prongs, in an 18ct bi-colour gold mount, size J; 3.4 grams
Together with a Leo Diamond certificate **£200-300**



- 155 A sapphire and diamond cluster ring; the oval cut sapphire in rub-over mount within a border of round brilliant cut diamonds; to three stone diamond set concave shoulders. The plain white metal shank marked '750' and tests as 18 carat white gold, ring head 1.6 x 1.4 cm, ring size P, weighs 10.35 grams. **£500-700**



- 156 A pair of lapis lazuli and tiger's eye chequerboard cufflinks in 9ct gold, each comprising a square panel inlaid with lapis lazuli and tiger's eye, framed within a textured surround, toggle fittings, struck with Birmingham assay marks and maker's mark 'GMC', 1981, measures 1.8 cm wide, total weight of item 12.1 grams. **£300-500**



- 157 An orange sapphire and diamond pendant, the oval-cut sapphire of 11.2 x 8.9 x 5.5 mm, in double four claw mount below a trefoil surmount of round brilliant-cut diamonds, the bi-coloured mount marked '750' and tests as 18ct gold, drop length 1.7 cm, total weight of item 4.36 grams. **£200-300**



Fine Jewellery, Watches & Silver, 22nd Feb, 2024 09:30

- 158 A diamond solitaire ring, featuring a round brilliant diamond, with an estimated carat weight of 0.50ct, claw set in a white metal setting to a flat shank, tested as 9ct gold, size M, 2.5 grams **£300-500**



- 159 A Diamond set crossover engagement ring, featuring a round brilliant cut diamond with a stated weight of 0.81ct, H colour and VS2 clarity, claw set into white metal that tests as 14kt gold with diamond set shoulders with an additional stated weight of 0.20ct, ring size M1/2, total weight of item 2.54g. Accompanied by an AIG Milan laboratory report No. J3010354319 **£600-800**



- 160 An Edwardian curb link bracelet in 9ct rose gold, link partially textured with patterns, completed with a heart-shaped padlock clasp and safety chain, Birmingham assay marks for 1900, overall length 18.0 cm, total weight of item 16.0 grams. **£200-300**



- 161 A diamond single stone pendant, the diamond with an estimated weight of 1.05ct, in a claw setting, suspended from a bail marked '375'. Total weight 1.2 grams **£500-700**



- 162 A gem-set floral necklace, featuring three centred floral settings with rubies, the largest set with rubies and diamonds, in bi-colour metal, to a bi-colour metal necklace with articulated links, stamped '750', 23 grams **£800-1,200**



Fine Jewellery, Watches & Silver, 22nd Feb, 2024 09:30

- 163 A synthetic sapphire single stone pendant, the cushion shape synthetic sapphire measuring 20.5 x 15.6 x 8.1mm, in a claw setting to a bail marked '18k'. Total weight 7.6 grams **£200-300**



- 164 An orange garnet and diamond ring in 18ct gold; the oval-cut garnet of 10.4 x 8.4 x 6.5 mm, in four claw out above tiered shoulders set with three graduated baguette cut diamonds, ring size N, total weight of item 4.2 grams. **£200-300**



- 165 A suit of cultured pearl necklace, bracelet and stud earrings; the necklace comprising a row of potato-shaped silver cultured pearls, with an average diameter of 7.0 mm, alternating with spherical bead spacers and completed with a lobster clasp, yellow metal engraved with Kuwaiti assay marks 750, 43.5 cm long; the matching bracelet measures 19.0 cm long; together with a pair of round cultured pearl stud earrings, 7.7 mm in diameter, peg and butterfly fittings, yellow metal marked '750'; Total weight of items 38.2 grams. (3) **£200-300**



- 166 A Modernist-style enamel bombé ring, raised polychromatic enamel on a textured dome, to tapering shank, yellow metal marked 'K18', size R, total weight 5.8 grams. **£200-400**



- 167 Garrard - a diamond-set dome ring in 18ct white gold, comprising a dome adorned with a cruciform decoration channel-set with an array of princess-cut diamonds, encompassed by a line of round brilliant-cut diamonds, to a tapered shank, signed and engraved with London assay marks, 2004, ring head 14.3 wide, 10.6 mm high, ring size M½, total weight 17.2 grams. **£800-1,200**



Fine Jewellery, Watches & Silver, 22nd Feb, 2024 09:30

- 168 Two closed bangles; to include a twisted rope bracelet with braided motif, 7.0 in diameter; another with faceted design, 7.4 cm in diameter; both in yellow metal marked '18k', total weight of items 21.5 grams. (2) **£700-900**



- 169 A diamond set dress ring, featuring a central round brilliant cut diamond measuring approximately 5.5mm claw set into a white metal surround further mounted in yellow metal that tests as 18ct yellow gold in the shape of an oblong saddle style head with tapering shank, ring size H (leading edge) total weight of item: 10.00g **£400-600**



- 170 A flat curb link chain terminating with a lobster clasp, yellow metal stamped "18k" and "750", measuring 60cm in length, total weight 25.6g. **£800-1,200**



- 171 An emerald and diamond ring; the ring comprising a rectangular step-cut emerald of 12.3 x 9.8 x 6.1 mm, in a columnar mount with three stone round brilliant cut diamond shoulders, to a plain shank in yellow metal marked '750', ring size Q½; Together with a pair of single stone emerald earrings, each with step-cut emeralds of 7.9 x 6.0 mm claw-set below three-stone diamond surmount, unmarked yellow metal testing 14ct; Gross weight 12.60 grams. (2) **£400-600**



- 172 Cartier - a matched pair of ruby and diamond earrings, circa 1940s, one signed 'Cartier London', the other unmarked, each with a scrolling foliate design set with old cut diamonds and a cluster of rubies, measuring 25mm in length, with clip fittings to the reverse. Total weight 8.9 grams. **£400-600**



Fine Jewellery, Watches & Silver, 22nd Feb, 2024 09:30

- 173 An emerald and white sapphire pendant; set with a central oval-cut emerald in claw mount, approximately measures 14.0 x 11.5 x 5.5 mm, above a ribbed surround with a single stone white sapphire surmount, unmarked yellow metal mount testing 14 carat gold, 2.6cm wide, total weight 9.16 grams. **£600-800**



- 174 An opal and diamond cluster ring, set with a large oval white opal measuring 18.1 x 13mm, encircled by round brilliant cut diamonds with a total estimated diamond weight of 1.00ct, in claw settings, to a shank with hallmarks for 18ct gold, ring size K 1/2. Total weight 8.1 grams **£350-450**



- 175 A late 19th-century diamond pendant/brooch in a concentric floral design set with old cut diamonds, with a removable diamond bow bail, the brooch with a total estimated diamond weight of 3.00ct, measuring 63mm x 37mm including bail, with removable brooch fitting to the reverse, convertible from brooch to pendant. Total weight 19.6 grams. **£800-1,200**



- 176 A diamond target pendant, set with a central round brilliant cut diamond with an estimated weight of 0.40ct, encircled by two rows of diamonds bringing the total estimated diamond weight to 1.60ct, in grain settings, mounted in white metal marked '18k', the pendant measuring 19mm diameter. Total weight 4.6 grams **£1,200-1,800**



- 177 A three-stone sapphire and diamond ring in 18ct white gold, set to the centre with an oval-cut sapphire of bright blue colour, approximately measuring 8.7 x 7.4 x 4.2 mm, flanked by two brilliant-cut diamonds on the sides, in claw settings to a tapering flat-edged D-section shank, London hallmarked '750' with maker's mark 'AG', 2004, ring size L, total weight of item 5.9 grams. **£1,000-1,500**



Fine Jewellery, Watches & Silver, 22nd Feb, 2024 09:30

- 178 A pair of diamond set drop earrings, by Crivelli. The round brilliant cut diamonds weigh approximately 7.30ct in total. Each pear-shaped ear pendant suspends five diamond set drops. The latch backs are stamped 18k, and the top of each earring is signed "CRIVELLI" to the side. The length of each pendant is 8.5cm. Gross weight 30.1g. **£3,500-5,500**



- 179 A diamond solitaire ring convertible to diamond cluster ring, the central round brilliant cut diamond with an estimated weight of 1.90ct, between marquise cut diamond set shoulders, the solitaire ring fitting within a removable border of round brilliant cut diamonds, both parts with a square shank, the ring with a grand total estimated diamond weight of 4.50ct, ring size P. Total weight 11.5g. **£3,000-5,000**



- 180 A ruby and diamond brooch in a continuous ribbon design set with cushion shape rubies and old cut diamonds, with a total estimated diamond weight of 2.00ct, measuring 31 x 31mm, testing as 18ct, with brooch pin fitting to the reverse. Total weight 5 grams **£800-1,200**



- 181 A curb link bracelet with heart padlock clasp in 9ct yellow gold, suspending with a 9ct gold charm with miniature wedding rings and another Masonic charm set with rose-cut diamonds, Birmingham assay marks for 1965, Masonic charm unmarked however testing 9ct, overall length 17.5 cm, total weight of item 18.0 grams. **£300-400**



- 182 Moussaieff - a cultured pearl and diamond hinged torque bangle, with braided details in a satin finish and diamond-set trims, cupping a pair of silver cultured saltwater pearls of 12.0 mm, hinge opening, metal marked '750' and struck with Moussaieff retailer's mark 'CLM' in lozenge cartouche, inner diameter 5.7 cm, total weight 47.2 grams. **£2,200-2,500**



Fine Jewellery, Watches & Silver, 22nd Feb, 2024 09:30

- 183 Moussaieff - a diamond set cuff bangle, featuring a rectangular buckle with a border of round brilliant cut diamonds with a total estimated diamond weight of 0.30ct, marked '750' to the reverse with Moussaieff retailer's mark 'CLM' in lozenge cartouche, to a flat wide bangle formed of yellow metal wire twisted around a copper core, with yellow metal terminals, testing as 18ct. Total weight 35.4 grams (including core) **£1,500-2,000**



- 184 An Edwardian diamond bar brooch, featuring a series of old cut diamonds, the central diamond with an estimated weight of 1.20ct, within a floral diamond-set border with millegrain edges, the brooch with a grand total estimated diamond weight of 6.00ct, measuring 94mm, in white and yellow metal testing as platinum and 18ct gold. Total weight 9.7g. In a fitted case by Gibson & Co. Ltd.



Owned by Mrs Martin, wife of the successful businessman John Martin who owned the construction firm responsible for many notable buildings in Belfast including the Grand Opera House and City Hall, and thence by descent.

Bought for the opening of Belfast City Hall, and worn by Mrs Martin on meeting Elizabeth Bowes-Lyon, Duchess of York, at the ceremony of the laying of the first foundation stone of the new art gallery on the 22nd July 1924, attended by the Duke and Duchess, as pictured in the photograph (photo not included) **£6,000-8,000**

- 185 Van Cleef & Arpels - a boxed diamond dress set, comprising cufflinks, buttons and shirt studs, of square lattice blocks channel-set with square step-cut diamonds of an estimated grand total of 16.20ct; the pair of cufflinks with 10.5 mm wide panel fitted with bridge connectors, four matching buttons, and three spring-back studs with 7.3 mm wide panels, in fitted case, all signed and numbered, maker's mark for Charles Profillet, mounts struck with French wolf head hallmark for platinum, button fittings with eagle head mark for 18ct, shirt stud fittings marked '14Kt', total weight of items 30.7 grams. **£8,000-12,000**



- 186 A diamond cluster pendant, the central round brilliant cut diamond with an estimated weight of 0.50cts, estimated colour and clarity H/SI2, within a circle of smaller round brilliant cut diamonds, to a yellow metal chain marked '750', measuring 40.5cm in length. Total weight 2.5 grams **£1,000-1,500**



Fine Jewellery, Watches & Silver, 22nd Feb, 2024 09:30

- 187 A pair of Mikimoto pearl and diamond drop earrings, featuring cultured pearls measuring approximately 8.4mm, to white metal surmounts stamped '750', each bezel set with a round brilliant diamond measuring approximately 2.5mm, with post fittings to the reverse and butterfly backs, in a Mikimoto box; 3.0 grams **£400-600**



- 188 A diamond dress ring, set with a central round brilliant cut diamond with an estimated weight of 0.35ct, with baguette cut and round brilliant cut diamonds in an Art Deco style design, the head measuring 16 x 10.8mm, mounted in white metal stamped '950' and testing as platinum, ring size S. Total weight 4.7 grams **£200-300**



- 189 A ruby and diamond flower brooch, featuring a central cluster of rubies, set with single-cut diamonds to the edge of each petal, with textured leaves, marked 'Italy 18K' to the reverse, with brooch pin fitting, the brooch measuring 52 x 34mm. Total weight 20.2 grams **£300-500**



- 190 Georg Jensen - an oval foliate brooch, centred with an oval empty cartouche within a repoussé surround with leaf and beadwork design, fitted with hinged pin stem and roll-over catch, No. 146, 1915-1932 maker's mark, stamped 925, overall dimension 5.3 x 4.0 cm, total weight 24.6 grams. **£150-200**



- 191 Georg Jensen - a heart-shaped pendant on a chain depicting a flying dove with olive branches, loop bail suspending from a cable link chain with toggle clasp, designed by Arno Malinowski, No. 97, with 1933-44 makers marks, stamped as 925, overall 4.2 x 3.9 cm, 28.5 cm drop, total weight of item 15.4 grams. **£150-200**



Fine Jewellery, Watches & Silver, 22nd Feb, 2024 09:30

- 192 Georg Jensen - 'Arm Ring' with amethyst, a tension clamp opening bangle with an oval panel of an opaque amethyst set in a ring mount, to a tapered concave band, designed by Vivianna Torun Bülow-Hübe, No. 203, post-1945 maker's mark, signed 'TORUN', stamped 925S, inner circumference 15.5 cm, bangle width 2.2 cm, hard stone dimension 4.5 x 3.5 cm, total weight of item 48.0 grams. **£400-600**



- 193 Georg Jensen - two brooches and a pair of screw-back earrings; including a 'Moonlight Blossom' brooch, No. 156, 1915-1932 maker's mark, 4.5 cm wide; an openwork foliate brooch with bead motifs, No. 236A, post-1945 maker's mark, 4.3 cm wide; a pair of tulip earrings of similar design with screw-on fittings, No. 51, post-1945 maker's mark, 2.4 cm wide; Total weight of items 23.9 grams. (3) **£200-300**



- 194 Georg Jensen - a brooch depicting a kneeling fawn and flowers, fitted with a hinged pin stem and roll-over safety catch, designed by Arno Malinowski, No. 256, 1933-44 maker's mark, stamped as 925 sterling, overall measuring 4.4 x 3.4 cm, total weight of item 12.0 grams. **£100-150**



- 195 Georg Jensen - a dress ring set with a rutiled quartz, of bottle cork shape, composed of cylindrical quartz with fine yellowish rutile inclusions, collet-set to a tapering open shank, designed by Vivianna Torun Bülow-Hübe, No. 151, post-1945 maker's mark, signed 'TORUN', stamped 925S, ring size L½, hard stone dimension 12.1 mm x 13.3 mm, total weight of item 16.1 grams. **£300-500**



- 196 Georg Jensen - 'Dewdrop' dress ring set with rose quartz, of wrap-around form with a bifurcated motif, collet-set with an oval rose quartz cabochon of 8.3 x 6.4 mm, designed by Vivianna Torun Bülow-Hübe, No. 152, post-1945 maker's mark, stamped 925S, ring size L½, total weight 5.9 grams. **£150-200**



Fine Jewellery, Watches & Silver, 22nd Feb, 2024 09:30

- 197 Georg Jensen - a heart-shaped brooch depicting a flying dove with olive branches, fitted with a hinged pin-stem and roll-over safety catch, designed by Arno Malinowski, No. 239, with 1933-44 makers marks, stamped as 925, overall dimension 4.2 x 3.9 cm, total weight of item 12.5 grams. **£100-150**



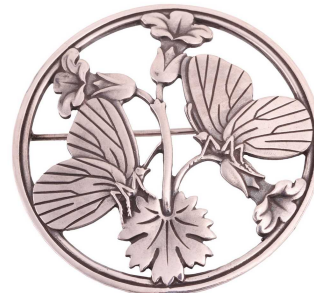
- 198 Georg Jensen - a dress ring with polished labradorite, comprises an open shank with a flat long oval panel end, and set with an oval labradorite cabochon on the other end, designed by Bent Gabrielsen, No. 172, post-1945 maker's mark, stamped 925S, ring head 2.8 cm long, ring size S, 17.0 grams. **£150-200**



- 199 Georg Jensen - a foliate link bracelet, domed centre flanked by repoussé berries and foliate motifs, to a conforming box clasp with safety catch, No. 57B, 1933-44 maker's mark, stamped 925, overall length 18.5 cm, total weight 27.5 grams. **£300-500**



- 200 Georg Jensen - a round openwork brooch depicting two butterflies resting upon bellflowers, fitted with hinged pin-stem and roll-over safety catch, designed by Arno Malinowski, No. 283, with 1933-44 maker's mark, stamped 925, measures 5.4 cm wide, total weight 18.8 grams. **£100-150**



- 201 Georg Jensen - an abstract 'amoeba' maroon enamel brooch, fitted with a hinged pin stem and roll-over safety catch, designed by Henning Koppel, No. 307, post-1945 maker's mark, HK maker's mark, stamped Sterling Denmark, overall measuring 6.4 x 4.5 cm, total weight of item 33.3 grams. **£200-300**



Fine Jewellery, Watches & Silver, 22nd Feb, 2024 09:30

- 202 Georg Jensen - an openwork radish brooch, fitted with tube hinged pin stem and trombone clasp, No. 18, 1930s maker's mark, stamped as 925, overall measuring 4.5 x 3.5 cm, total weight 10.0 grams. **£100-150**
- 203 Georg Jensen - 'Neck Ring' with quartz multi-drop pendant; comprising a streamlined tension clamp opening necklace, dangling a detachable rock crystal and amethyst drop pendant with bar suspension, both designed by Vivianna Torun Bülow-Hübe, No. 169 & No. 135, post-1945 maker's mark, signed 'TORUN', stamped 925S, pendant drop length 9.5 cm, total weight of item 75.2 grams. **£1,500-2,000**
- 204 Georg Jensen - a triple-strand floral necklace set with coral, comprising repoussé links in the form of stylised bud foliage and berries, collet set with oval and round coral cabochons, to a conforming clasp with tongue and figure-of-eight safety catch, No. 1, post-1945 maker's mark, signed and stamped 'Sterling Denmark', overall length 37.0 cm, total weight of item 144.8 grams. **£3,000-5,000**
- 205 Georg Jensen - a necklace with kneeling fawn and flowers, attached to a cable chain and toggle clasp, designed by Arno Malinowski, No. 95, 1933-44 maker's mark, stamped as 925, drop length 27.5 cm, pendant measures 4.4 x 3.4 cm, total weight of item 14.6 grams. **£150-200**
- 206 Georg Jensen - a plaque link bracelet with dove and foliate design, formed with repoussé links with alternating motifs, completed with a conforming box clasp with safety catch, motif designed by Kristian Mohl-Hansen, No. 24, post-1945 maker's mark, stamped sterling, measuring 2.9 cm wide, 19.0 cm long, total weight 55.0 grams. **£400-600**



Fine Jewellery, Watches & Silver, 22nd Feb, 2024 09:30

- 207 Georg Jensen - a round openwork necklace depicting two butterflies resting upon bellflowers, fitted with cable link chain with toggle clasp, designed by Arno Malinowski, No. 105, with 1933-44 maker's mark, stamped 925, measures 5.4 cm wide, total weight 23.1 grams. **£150-200**



- 208 Georg Jensen - a circular brooch depicting a dove in wreath with chrysoprase cabochon accents, fitted with a hinged pin stem and roll-over catch, dove motif designed by Kristian Mohl-Hansen, No. 70, post-1945 maker's mark, stamped as 925S, 4.9 cm wide, total weight 17.9 grams. **£150-200**



- 209 Georg Jensen - 'Moonlight grapes' brooch, repoussé and chased in a botryoidal cluster imitating a bunch of grapes, suspending from vine leaves surmount, fitted with hinged pin stem and roll-over safety catch, designed by Harald Nielsen, No. 217B, post-1945 maker's mark, stamped sterling, overall measures 7.0 x 4.0 cm, total weight 25.5 grams. **£100-150**



- 210 Two loose star sapphires. The first oval cabochon with pale blue body colour approximately measures 17.8 x 15.3 x 11.7 mm, weighs 36ct; the smaller cabochon approximately measures 14.2 x 11.2 x 4.6 mm and weighs 7.5ct. (2) **£800-1,200**

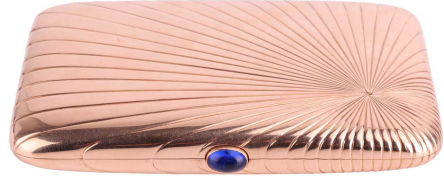


- 211 An Imperial Russian cigarette case, by Gabriel Nykänen (Gabriel Niukkanen) 1885-1904, of rectangular form with rounded corners and bands of horizontal reeding, thumbpiece set with an oval sapphire cabochon, struck to the interiors and thumbpiece, 56 zolotnik (Russian gold standard for 14ct), assay master's mark 'AP' for Alexander Vasilyevich Romanov, and workmaster's mark 'GN' for Gabriel Nykänen, 9.3 x 6.4 x 1.5 cm, total weight 112.9 grams.
Gabriel Nykänen was a workmaster for House of Fabergé during 1889-1917 **£3,500-4,500**



Fine Jewellery, Watches & Silver, 22nd Feb, 2024 09:30

- 212 A large Russian cigarette case, of rectangular form with rounded corners, both sides engraved with radiating decoration, push thumbpiece set with an oval blue paste, struck with assay marks to the interior, 56 zolotnik mark for Odessa during 1908-1926, workmaster's mark partly with Cyrillic 'F', 11.0 x 8.5 x 1.7 cm, total weight of item 214.3 grams. **£6,000-8,000**



- 213 An early twentieth-century Russian cigarette case, of rectangular form and fluted design, with a vesta compartment, featuring a diamond-set monogram 'AK' to the front and a cabochon sapphire set thumbpiece, measuring approximately 95mm x 72mm, with assay marks for 56-zolotnik gold (Russian gold standard for 14ct gold) and district mint marks for St Petersburg, 1908-1927; maker's marks 'L.?'; 172.6 grams **£5,000-7,000**



- 214 A Longines Automatic Master collection watch
Model: L2.755.4
Serial: 44223740
Case Material: Steel
Case diameter: 38.5mm
Dial: White/Cream
Numerals: Arabic
Movement: Automatic
Calibre: L.636.5
Functions: Day/Date
Strap: Steel
Buckle: Double Folding
Box: No
Papers: No **£200-300**



- 215 A Smiths DeLuxe 9ct Gold Gentleman's Wristwatch
Model: N/A
Serial: N/A
Year: 1950s
Case Material: 9ct Yellow Gold, Hallmarked, Caseback Engraved
Case diameter: 31mm
Dial: Cream
Numerals: Arabic
Movement: Mechanical
Calibre: 113
Functions: Second Subdial
Strap: Hirsch Leather
Box & Papers: Not Present
Gross Weight: 33.79g **£200-300**



Fine Jewellery, Watches & Silver, 22nd Feb, 2024 09:30

- 216 A Buran Aviator Sturmskie Automatic Gentleman's Wristwatch
Model: 1025529
Serial: 775
Year: 2007
Case Material: Stainless Steel
Case diameter: 44mm
Dial: Black
Numerals: Arabic
Movement: Automatic
Calibre: ETA 2416
Functions: Date Aperture
Strap: Black Patent Crocodile
Buckle: Stainless Steel
Box & Papers: Yes **£200-300**



- 217 An Omega Constellation quartz dress watch
Model: 1431
Serial: 3980866
Case Material: Steel
Case diameter: 33mm
Dial: Gold
Numerals: Roman
Movement: Quartz ETA replacement (Unsigned)
Functions: Date
Strap: Bi-metal
Buckle: Folding
Box: Yes
Papers: No **£200-300**



- 218 An Omega Seamaster Gentleman's Wristwatch
Model: 1960128
Serial: 43557518
Year: 1979
Case Material: Stainless Steel
Case diameter: 36mm
Dial: Silvered
Numerals: Baton
Movement: Quartz
Calibre: 1342
Functions: Date Aperture
Strap: Stainless Steel
Buckle: Omega Folding Clasp
Box & Papers: Omega Service Case **£250-350**



- 219 A Longines yellow gold dress watch featuring a hand-wound mechanical movement in a yellow metal case stamped 14kt and measuring 34mm with an off-white dial covered in acrylic glass, engraving to the rear case back, on a generic elasticated band. **£300-400**



Fine Jewellery, Watches & Silver, 22nd Feb, 2024 09:30

- 220 A Must De Cartier Tank Mechanical Vermeil Watch.
 Serial: 6 164984
 Case Material: Silver-gilt
 Case diameter: 23mm
 Dial: Tri-colour
 Numerals: None
 Movement: Handwound
 Strap: Brown leather
 Buckle: Pin
 Box: Yes
 Papers: Yes **£600-800**
- 221 A Breitling Navitimer 3300 Jupiter 'Iraqi Airforce' Gentleman's Wristwatch
 Model: 80971
 Serial: 21589
 Year: 1980's
 Case Material: Stainless Steel, Caseback Having Iraqi Airforce Insignia
 Case diameter: 43mm
 Dial: Black
 Numerals: Dot and Arabic Luminous Indices
 Movement: Quartz
 Calibre: B232
 Functions: Chronograph, Bi-Directional Rotation Bezel, Digital Register, Back Light
 Strap: Stainless Steel
 Buckle: Breitling Folding Clasp
 The Breitling Navitimer 3300 is one of a series of watches gifted to Iraqi Airforce pilots during the 1980s. This example was acquired in Iraq in the 1990s. **£1,000-1,500**
- 222 A Longines 9ct Gentleman's Mechanical Wristwatch
 Model: 13088
 Serial: 11139857
 Year: 1960s
 Case Material: 9ct Yellow Gold, Hallmarked and Signed Baume
 Case diameter: 31mm
 Dial: Silvered
 Numerals: Baton
 Movement: Mechanical
 Calibre: 19.4
 Functions: Second Subdial
 Strap: Black Leather
 Buckle: Base Metal
 Box & Papers: No
 Gross Weight: 23g **£300-500**



Fine Jewellery, Watches & Silver, 22nd Feb, 2024 09:30

223 A Cartier Ballon Bleu Ladies Wristwatch

Model: 4373
Serial: 277326BX
Year: 2010s
Case Material: Stainless Steel Bi-Colour
Case diameter: 32mm
Dial: Guilloche Enamel Silvered
Numerals: Roman
Movement: Mechanical Self Winding
Calibre: 1853
Strap: Stainless Steel Bi-Colour
Buckle: Folding Clasp
Box & Papers: No **£1,000-1,500**



224 A Van Cleef & Arpels 18ct 'Roma' Mechanical Wristwatch

Model: 132054
Serial: 124351
Year: 2000s
Case Material: 18ct Hallmarked Yellow Gold
Case diameter: 36mm
Dial: White, Featuring Portrait of Former President of Gabon, Omar Bongo Ondimba(1935-2009)
Numerals: Baton and Roman
Movement: Automatic
Calibre: 2892A2
Strap: 18k Hallmarked Yellow Gold
Buckle: 18k Hallmarked and Signed Yellow Gold Folding Clasp



Box & Papers: No
Gross Weight: 152.88g
Consigned by a member of the family.
Omar Bongo Ondimba (1935-2009) was the second president of Gabon and was in office for almost 42 years, from 1967 until his death in 2009.
One of the wealthiest heads of state in the world, Bongo commissioned a number of wristwatches featuring his portrait by the likes of Cartier, Hublot, Piaget, Van Cleef and Arpels and Chopard among luxury brands. **£4,000-6,000**

225 An Asprey Baumatic 18ct Mechanical Gentleman's Wristwatch

Model: 35105
Serial: 766032
Year: 1970s
Case Material: Bark Effect 18ct Yellow Gold
Case diameter: 32mm
Dial: Bark Effect Gold
Numerals: Baton
Movement: Baumé & Mercier Ultra Thin Micro-Rotor
Functions: Date Aperture
Strap: Black Leather
Buckle: Gold Tone Clasp
Box & Papers: Asprey Service Pouch and Note
Gross Weight: 34.9mm **£600-800**



Fine Jewellery, Watches & Silver, 22nd Feb, 2024 09:30

- 226 An 18ct gold manual wind cocktail watch, by Blancpain. The square-shaped baton dial is surrounded by round-brilliant cut rubies. Designed as a hexagonal-shaped hinged bangle with a textured gold finish and stamped "CORLETTO ITALY 18K" to the reverse of the face, and the same again to the back of the open box clasp. The inside diameter of the bangle is 6cm. Gross weight 64g. **£2,000-3,000**



- 227 A Rolex Datejust 26mm bi-metal lady's watch
Model: 69173
Serial: R457219
Year: 1988
Case Material: Steel
Case diameter: 26mm
Dial: Champagne/grey
Numerals: Diamond dot
Movement: Automatic
Functions: Date
Strap: Bi-metal Jubilee
Buckle: Folding
Box: No
Papers: No **£1,000-1,500**



- 228 A Chopard Happy Sport Stainless Steel Wristwatch
Model: 8347
Serial: 28/8964-23 1173226
Year: 2000s
Case Material: Stainless Steel
Case diameter: 38mm
Dial: White, Featuring Portrait of Former President of Gabon, Omar Bongo Ondimba (1935-2009)
Numerals: Roman
Movement: Quartz
Functions: Date Aperture
Strap: Chopard Blue Crocodile
Buckle: Chopard Clasp
Box & Papers: No
Estimated Carat Weight: 0.4ct
Consigned by a member of the family.
Omar Bongo Ondimba (1935-2009) was the second president of Gabon and was in office for almost 42 years, from 1967 until his death in 2009.
One of the wealthiest heads of state in the world, Bongo commissioned a number of wristwatches featuring his portrait by the likes of Cartier, Hublot, Piaget, Van Cleef and Arpels and Chopard among luxury brands. **£1,500-2,000**



Fine Jewellery, Watches & Silver, 22nd Feb, 2024 09:30

- 229 An 18ct gold 1970's omega cocktail watch

Model: 8366

Serial: 37114495

Year: 1973

Case Material: 18ct gold

Case diameter: 24mm

Dial: Brown

Numerals: Baton

Movement: Handwound

Calibre: 625

Strap: 18ct gold

Buckle: Folding clasp

Box: Yes

Papers: No

Total weight of item: 87.40g **£3,500-5,500**



- 230 A De Laneau 4 time zone white gold and diamond watch, featuring four quartz movements in a white metal case stamped '750' and measuring 31mm with a diamond and sapphire set dial with a black background and four dials, the strap is missing. **£500-700**



- 231 An Omega Seamaster De Ville Gentleman's Wristwatch

Model: 166.020

Serial: 20682466

Year: 1963

Case Material: Gilt Stainless Steel

Case diameter: 35mm

Dial: Silvered Crosshair

Numerals: Baton

Movement: Mechanical Self Winding

Calibre: 562

Functions: Date Aperture

Strap: Gilt Beads Of Rice

Buckle: Omega Folding Clasp **£300-500**



Fine Jewellery, Watches & Silver, 22nd Feb, 2024 09:30

232 An Omega Automatic Gentleman's Wristwatch

Model: 2638-4

Serial: 10974735

Year: 1944

Case Material: Gold Plated Stainless Steel

Case diameter: 35mm

Dial: Patinated Silvered

Numerals: Baton

Movement: Automatic Bumper Movement

Calibre: 28.10RA PC

Functions: Second Subdial

Strap: Aftermarket Brown Leather

Buckle: Base Metal

Box & Papers: No

The Bumper Movement was pioneered by Omega, with the release of its first commercial example (Cal. 28.10RA PC) in 1943. This Watch therefore, is a particularly early example of use of the movement. **£300-500**



233 A Must De Cartier Tank quartz Vermeil Watch. Serviced by The Watch Doctors on 04/01/2024 with documentation and a 2-year warranty, in addition to some Cartier service documentation.

Serial: 6 81006 26601

Case Material: Silver-gilt

Case diameter: 23mm

Dial: Tri-colour (three gold centre)

Year: 1984

Numerals: None

Movement: Quartz

Strap: Black leather

Buckle: Pin

Box: No

Papers: No (Cartier booklet included)

Including a Cartier travel pouch and a Watch Doctors travel pouch **£1,000-1,500**



Fine Jewellery, Watches & Silver, 22nd Feb, 2024 09:30

- 234 A Chopard Happy Sport Stainless Steel Wristwatch
 Model: 8347
 Serial: 28/8964-23 1173242
 Year: 2000s
 Case Material: Stainless Steel
 Case diameter: 38mm
 Dial: White, Featuring Portrait of Former President of Gabon, Omar Bongo Ondimba(1935-2009)
 Numerals: Roman
 Movement: Quartz
 Functions: Date Aperture
 Strap: Chopard Black Crocodile
 Buckle: Chopard Clasp
 Box & Papers: No
 Estimated Carat Weight: 0.4ct
 Consigned by a member of the family.
 Omar Bongo Ondimba (1935-2009) was the second president of Gabon and was in office for almost 42 years, from 1967 until his death in 2009.
 One of the wealthiest heads of state in the world, Bongo commissioned a number of wristwatches featuring his portrait by the likes of Cartier, Hublot, Piaget, Van Cleef and Arpels and Chopard among luxury brands. **£1,500-2,000**



- 235 A Breitling Colt Automatic Gentleman's Wristwatch
 Model: A17380
 Serial: 1235090
 Year: 2010
 Case Material: Stainless Steel
 Case diameter: 41mm
 Dial: Black
 Numerals: Baton
 Movement: Automatic Chronometer
 Calibre: 2824-2
 Functions: Date Aperture, Rotating Unidirectional Bezel, Luminous Hands
 Strap: Stainless Steel Bracelet
 Buckle: Breitling Stainless Steel Folding Clasp
 Box & Papers: Full Box, Papers, Tags, Receipt of Purchase, Chronograph Cert, Breitling Travel Case, Spare Links, Bezel Cover Present.
 Private Collection **£800-1,000**



Fine Jewellery, Watches & Silver, 22nd Feb, 2024 09:30

- 236 A Hamilton G.S. Tropical Stainless Steel Mechanical Gentleman's Wristwatch
Model: G.S. (General Service) 75003-3
Serial: 684, Inner Caseback 1 691 258
Year: 1960's
Case Material: Stainless Steel
Case diameter: 36mm
Dial: Black
Numerals: Arabic
Movement: Mechanical
Calibre: 684
Functions: Tropicalised Case, Antimagnetic, Water Resistance



Strap: Black Leather

Buckle: Steel

Box: No

Papers: Yes

In the 1960's Hamilton begun supplying the British Military with with the 6B. Alongside this watch, designed for Airforce personnel, the G.S. was issued to government agents and subcontractors working on projects in the Commonwealth. It is understood that a number of these projects stood as cover for former military personnel operating to establish intelligence and security on behalf of HM Government. **£300-500**

- 237 An IWC Mark XI British Military Issue Gentleman's Wristwatch
Model: 6B/346
Serial: 977/48
Year: 1948
Case Material: Stainless Steel
Case diameter: 36mm
Dial: Black, Stamped With 'Broad Arrow' and 'T'
Numerals: White Arabic and Baton Tritium
Movement: Mechanical No. 1162219
Calibre: C89
Strap: Gray NATO
Box & Papers: Not Present



The Mark XI IWC Pilots Watch was introduced in 1948 following the famed success of the WWII issued Mark X. The watch was never available to the public and was offered to RAF personnel and civilian pilots as an aviation tool, hence its 'Broad Arrow' insignia. Its reliability saw production of the model through to the early 1980s, making this particular example from the Mark XI's first year of production particularly rare. **£3,000-4,000**

Fine Jewellery, Watches & Silver, 22nd Feb, 2024 09:30

- 238 An exceptionally rare Platinum Audemars Piguet Royal Oak
33mm Ref: 56175
No: 101
Model: 56175
Serial: D52051
Movement no: 413728
Year: 1997
Case Material: Platinum
Case diameter: 33mm
Dial: Dark Blue Tapisserie
Numerals: Diamond Dot
Movement: Quartz
Calibre: 2612
Functions: Date
Strap: Platinum
Buckle: Gold folding
Box: Yes
Papers: No
Purchased in 1997 for £28,000 **£10,000-15,000**



- 239 A Tag Heuer Aquaracer 300 meters watch
Model: WAY101C
Serial: WZJ5103
Case Material: Steel
Case diameter: 44mm
Dial: Blue
Numerals: Baton
Movement: Quartz ETA
Functions: Date
Strap: Steel
Buckle: Folding clasp
Box: No
Papers: No **£400-600**



- 240 An Alain Philippe 18ct White Gold Gentleman's Wristwatch
Serial: 10040.52-017
Year: 2000s
Case Material: 18ct White Gold, Diamond Inset Bezel
Case diameter: 37mm
Dial: Mother of Pearl Featuring Portrait of Former President of Gabon, Omar Bongo Ondimba(1935-2009)
Numerals: Diamond Set and Arabic
Movement: Quartz
Functions: Second Subdial
Strap: Black Alligator
Buckle: Diamond Inset 18k White Gold
Box & Papers: No
Gross Weight: 104.58g
Consigned by a member of the family.
Omar Bongo Ondimba (1935-2009) was the second president of Gabon and was in office for almost 42 years, from 1967 until his death in 2009.
One of the wealthiest heads of state in the world, Bongo commissioned a number of wristwatches featuring his portrait by the likes of Cartier, Hublot, Piaget, Van Cleef and Arpels and Chopard among luxury brands. **£2,500-3,500**



Fine Jewellery, Watches & Silver, 22nd Feb, 2024 09:30

- 241 A Favre-Leuba 9ct Mechanical Gentleman's Wristwatch

Model: 7600 21

Serial: 122

Case Material: 9ct Yellow Gold

Case diameter: 33mm

Dial: Silvered

Numerals: Baton

Movement: Automatic

Functions: Date Aperture

Strap: Black Leather

Buckle: Gold Tone Clasp

Gross Weight: 26.7g **£300-500**



- 242 An Omega De Ville automatic 9ct gold wristwatch.

Model: 8383 - 1061

Serial: 35899066

Year: 1972

Case Material: 9ct gold

Case diameter: 33mm

Dial: Brown

Numerals: Roman

Movement: Automatic

Calibre: 711

Strap: 9ct gold

Buckle: Folding clasp

Box: Outer box only

Papers: Yes

Total weight of item: 58.80g **£500-700**



- 243 A Royama Automatic double signed Khanja dial 18ct yellow gold watch

Case Material: 18ct gold

Case diameter: 31mm

Dial: Gold - Khanja emblem of Oman

Numerals: Baton

Movement: Automatic Swiss

Functions: Date

Strap: 18ct gold

Buckle: folding

Box: No

Papers: No

The bezel features aftermarket set diamonds

Total weight of item: 93.00g **£3,000-4,000**



- 244 An Omega Deville Automatic with day date function, in a steel case measuring 36mm with a silver dial and day date aperture at 3 o'clock covered with acrylic glass all on a brown leather strap. **£300-400**



Fine Jewellery, Watches & Silver, 22nd Feb, 2024 09:30

- 245 A Longines 18ct Gentleman's Wristwatch
Model: 6667.1
Serial: 291
Year: 1960s
Case Material: 18ct Yellow Gold
Case diameter: 35mm
Dial: Silvered
Numerals: Baton & Arabic
Movement: Mechanical
Calibre: 23 Z
Functions: Second Aperture
Strap: Brown Leather
Buckle: Clasp
Box & Papers: No
Gross Weight: 39.5g **£300-500**
- 246 A Garrard & Co 9ct Gentleman's Mechanical Wristwatch
Model: 48888
Serial: S76/28
Year: 1995
Case Material: 9ct Yellow Gold
Case diameter: 35mm
Dial: Silvered
Numerals: Arabic and Baton
Movement: Automatic
Calibre: S76
Functions: Date Aperture
Strap: Brown Leather
Buckle: Gold Tone Clasp
Box & Papers: Yes **£300-500**
- 247 A Sapphire and Diamond mechanical cocktail watch, featuring a hand-wound mechanical movement in a yellow metal case that tests as an 18ct gold set with calibrated sapphires and 8-cut diamonds with a white dial all on a yellow metal tests as a 9ct gold snake bracelet with folding clasp. Total weight of item: 31.53g **£600-800**
- 248 A Must De Cartier Tri Colour Mechanical Wristwatch
Model: Argent Vermeil
Serial: 5 145602
Year: 1990's
Case Material: Gold Vermeil
Case diameter: 24mm
Dial: Tri Colour Metal
Numerals: N/A
Movement: Mechanical
Calibre: 2512
Strap: Leather
Buckle: Cartier Plated
Box & Papers: No **£600-800**



Fine Jewellery, Watches & Silver, 22nd Feb, 2024 09:30

249 An Omega Constellation Gentleman's Wristwatch

Model: 168018
 Serial: 30275254
 Year: 1969
 Case Material: Gold Plated Stainless Steel
 Case diameter: 36mm
 Dial: Silvered
 Numerals: Baton
 Movement: Automatic Chronometer
 Calibre: 564
 Functions: Date Aperture
 Strap: Brown Leather
 Buckle: Base Metal
 Box & Papers: No **£400-600**



250 A Chopard Happy Sport Oval Stainless Steel Wristwatch

Model: 8937
 Serial: 27/8937-23 1144583
 Year: 2000s
 Case Material: Stainless Steel
 Case diameter: 30mm
 Dial: White, Featuring Portrait of Former President of Gabon, Omar Bongo Ondimba(1935-2009)
 Numerals: Roman
 Movement: Quartz
 Functions: Date Aperture
 Strap: Chopard Blue Crocodile
 Buckle: Chopard Clasp
 Box & Papers: No
 Estimated Carat Weight: 0.22ct
 Consigned by a member of the family.
 Omar Bongo Ondimba (1935-2009) was the second president of Gabon and was in office for almost 42 years, from 1967 until his death in 2009.
 One of the wealthiest heads of state in the world, Bongo commissioned a number of wristwatches featuring his portrait by the likes of Cartier, Hublot, Piaget, Van Cleef and Arpels and Chopard among luxury brands. **£1,500-2,000**



251 A Jaeger-LeCoultre Reverso Classic Steel lady's wristwatch.

Model: 221.8.86
 Serial: 3432538
 Case Material: Steel
 Case diameter: 21mm x 29.5mm
 Dial: Silver
 Numerals: Arabic
 Movement: Handwound
 Calibre: 846/1
 Functions: N/A
 Strap: Blue Leather
 Buckle: Folding clasp
 Box: No
 Papers: No **£800-1,200**



Fine Jewellery, Watches & Silver, 22nd Feb, 2024 09:30

252 A Cartier Santos Automatic Lady's Watch

Serial: 090274942
Case Material: Steel
Case diameter: 24mm
Dial: White
Numerals: Roman
Movement: Automatic
Strap: Steel
Buckle: Folding clasp
Box: No
Papers: No **£1,500-2,000**



253 A Jaeger LeCoultre Master Ultra Thin Moon Phase

Gentleman's Wristwatch
Model: 176.8.64.S
Serial: 3359074
Year: 2016 Approx
Case Material: Stainless Steel Having an Exhibition Caseback
Case diameter: 39mm
Dial: Silvered
Numerals: Baton
Movement: Mechanical 30 Jewels
Calibre: 925
Functions: Moonfaze Aperture
Strap: Jaeger LeCoultre Black Alligator
Buckle: Stainless Steel Folding Clasp
Box & Papers: Not Present **£3,000-5,000**



254 A Tag Heuer Professional 200 Meters Lady's Watch

Model: WG 1320-2
Serial: EE2009
Case Material: Steel
Case diameter: 28mm
Dial: Grey
Numerals: Baton
Movement: Quartz ETA
Functions: Date
Strap: Bi-colour steel
Buckle: Folding
Box: No
Papers: No **£200-300**



255 A Rolex Cellini Ref: 4336 in 18ct gold dress watch.

Model: 4336
Serial: 4314831
Year: 1976
Case Material: 18ct gold
Case diameter: 26mm
Dial: Off white
Numerals: Baton
Movement: Manual
Calibre: 1600
Functions: N/A
Strap: integrated 18ct gold
Buckle: Folding with safety
Box: No
Papers: No **£3,000-4,000**



Fine Jewellery, Watches & Silver, 22nd Feb, 2024 09:30

256 An Omega 9ct Mechanical Gentleman's Wristwatch

Model: 99287

Serial: 8851411

Year: 1934

Case Material: 9ct Yellow Gold Cushion Case

Case diameter: 30mm Approx

Dial: Silvered

Numerals: Baton and Arabic

Movement: Mechanical

Functions: Second Subdial

Strap: Brown Leather

Buckle: Gold Tone

Gross Weight: 27.9g **£300-500**



257 A Chopard Happy Sport Stainless Steel Wristwatch

Model: 8347

Serial: 28/8967-23 1132949

Year: 2000s

Case Material: Stainless Steel, Inset Diamond Bezel

Case diameter: 38mm

Dial: White, Featuring Portrait of Former President of Gabon, Omar Bongo Ondimba(1935-2009)

Numerals: Roman

Movement: Quartz

Functions: Date Aperture

Strap: Stainless Steel

Buckle: Folding Clasp

Box & Papers: No

Approximate Carat Weight: 3.5ct

Consigned by a member of the family.

Omar Bongo Ondimba (1935-2009) was the second president of Gabon and was in office for almost 42 years, from 1967 until his death in 2009.

One of the wealthiest heads of state in the world, Bongo commissioned a number of wristwatches featuring his portrait by the likes of Cartier, Hublot, Piaget, Van Cleef and Arpels and Chopard among luxury brands. **£2,500-3,500**



258 A Longines Prima Luna steel Lady's watch

Model: L8.110.4

Serial: 52911183

Case Material: Steel

Case diameter: 26.5mm

Dial: Mother Of Pearl

Numerals: Diamond Dot

Movement: Quartz

Functions: Date

Strap: Steel

Buckle: Folding clasp

Box: No

Papers: No **£200-300**



Fine Jewellery, Watches & Silver, 22nd Feb, 2024 09:30

- 259 A J W Benson 9ct gold half-hunter pocket watch and Albert chain, featuring a keyless wound movement in a 9ct yellow gold case measuring 50mm with a white enamel dial and seconds subdial covered with acrylic glass, with a monogrammed case back attached to a yellow gold Albert curb link chain stamped 15ct with T-bar. Total weight of items: 131.34g **£1,000-1,500**



- 260 An open-face 18ct gold pocket watch and chain, featuring a keyless wound movement in an 18ct gold case measuring 46mm, with an off-white dial and seconds subdial covered with acrylic glass with an attached white and yellow metal chain that tests as 18ct gold with a coin fob in yellow metal that treats as 9ct gold. Total weight of all items: 70.72g **£1,000-1,500**



- 261 An Omega open-face pocket watch, featuring a keyless wound movement calibre 960 in a steel case measuring 48mm with a white enamel dial and seconds sub-dial, covered in acrylic glass.
Model: 121.1740
Serial: 34598256
Year: 1972 **£200-300**



- 262 A 9ct rose gold full hunter pocket watch, featuring a Swiss-made keyless wound movement in the 9ct rose gold case measuring 46.5mm wide with an off-white dial and second sub-dial covered with acrylic glass. Total weight of item: 55.52g **£350-450**



- 263 A Camerer Cuss & Co double signed Rolex open-face pocket watch in 9ct gold, featuring a Swiss-made keyless wound movement in a 9ct gold case measuring 49mm with a white enamel dial covered with acrylic glass, along with a 9ct gold T-bar. Total weight of all items: 104.21g **£600-800**



Fine Jewellery, Watches & Silver, 22nd Feb, 2024 09:30

- 264 A two-handled tea tray; rounded rectangular with a moulded border and raised, angled side handles. Sheffield 1944 by Frank Cobb & Co Ltd. 56 x 29cm, total weight 78.79ozt. **£800-1,200**



- 265 A George III silver teapot, by Henry Chawner & John Eames, London 1797, of shaped oval form with cow horn and bone finial and fruitwood handle, 15.9ozt. **£300-500**



- 266 Georg Jensen:- "Acanthus" pattern flatware service comprising eight table forks, eight tablespoons, eight dessert spoons, two sets of four dessert forks in different sizes, eight pastry forks, twelve coffee spoons, two pickle forks, a small sauce ladle, a cake slice, a serving slice and four serving spoons in three sizes, 77.7ozt **£1,500-2,000**



- 267 A collection of silver travel-themed miniature figures, featuring various modes of transportation; comprising a silver Rolls Royce 1906 Silver Ghost model by Douglas Pell Silverware, 1990; one 18th-century inspired horse-drawn carriage with continental silver hallmarks, a silver 18th-century inspired horse-drawn cart; a silver steam train, a silver SPAD S.XIII biplane model; an 18th century-inspired sedan chair with removable poles and a hinged door, with a set of playing cards inside the interior compartment; a silver bicycle; a motorbike with continental silver hallmarks and a silver travel suitcase with a hinged cover; 18.5 oz **£300-400**



- 268 A pair of Victorian silver candlesticks with weighted bases, London 1867, a matched pair of silver salts, a silver toast rack, a Mappin & Webb silver bowl, a pair of unmarked napkin rings, a pair of 800 standard small napkin rings, a silver napkin ring, a silver scone and plated items, 11.7ozt weighable hallmarked silver. **£250-350**



Fine Jewellery, Watches & Silver, 22nd Feb, 2024 09:30

- 269 A George II style coffee pot; of low bellied baluster form, with fluted spout and raised cover with urn finial. Scrolling fruit wood handle. London 1967 by C.J.Vander. 32 oz. **£300-500**



- 270 A collection of sixteen animal figures, all stamped '925' or '835'; comprising a mother and baby elephant by Mappin & Webb Ltd, a rhinoceros, a hippopotamus, a bear with her cub, a lion, a kangaroo, a dolphin, a penguin, a seal, a triceratops, a stegosaurus, a tyrannosaurus rex, a diplodocus, an owl and two tortoises, both featuring a hidden compartment under the shell; 10.8 oz (16) **£200-300**



- 271 A collection of miniature silver pieces comprising four silver perfume bottles, a silver pin tray, a miniature set of silver fire irons on a stand, a white metal scent bottle marked 925, a white metal salt spoon marked 925, a silver plated miniature quartz mantle clock, a white metal coal scuttle, two charms, a filigree dreidel, a fire dog with toasting fork and a finial (16). **£200-300**



- 272 A collection of nursery-themed miniature figures and items, comprising a silver Jemima Puddle-Duck by Mappin & Webb, a silver stork with chicks atop a chimney nest, a silver high chair, a silver basket with hinged covers, a rocking horse stamped '925', a push pram, three teddy-bear figurines, one with a hidden hinged compartment and a trinket box with floral detailing stamped '925'; 14.4 oz **£200-300**



- 273 A collection of woodland and garden-themed miniature figures, comprising a silver wheelbarrow with gardening tools and watering can by Chamberlain Clarke Partnership, a fox and hound pair of silver salt and pepper tops by Clive & Clarissa Cooke, a silver basket, a hedgehog stamped '925', a silver rat, a silver frog, a dovecote stamped '925', a silver squirrel, a silver egg and a fairy upon a snail, the shell featuring a hidden compartment; 11.3 oz **£200-300**



Fine Jewellery, Watches & Silver, 22nd Feb, 2024 09:30

- 274 A collection of five boating and sports figurines, all stamped '925' or '800', comprising a silver yacht by Douglas Pell Silverware, 1995; a silver fisherman in his boat; a cricket batsman and two gondoliers with oars in gondolas; 3.1 oz (5) **£200-300**



- 275 A silver cream jug commemorating the 350th Anniversary of the sailing of the Mayflower, the signing and the founding of the Plymouth Colony, 1620-1970, numbered 361/2000, London 1970, 7.4ozt, in presentation box together with Certificate of Authenticity, "A relation or journal of the beginnings and proceedings of English Plantation settled at Plimoth (sic) in New England 1620", a photograph of the presentation to President Richard M. Nixon in the Oval Office, in original packaging. **£200-300**



- 276 A 17th-century style white metal porringer, the flat chased decoration in the form of stylised flowerheads with twin cast scroll handles, 9.5cm diameter, 2.2ozt **£200-300**



- 277 A collection of miniatures comprising a white metal figure of a soldier and guard hut, a silver cannon, a watch key fob, two town reliefs on simulated marble plinths, one stamped 925 and a marcasite and white metal brooch/wath, stamped "Sterling Germany", the dial marked Provita Extra, (6). **£200-300**



- 278 An 18th Century Scandinavian spoon, a flat handle engraved with a landscape motif with florals and a figural church, leading to a wide rounded bowl engraved 'M.O.D 1751' within a wreathed circular cartouche, back of the handle with stippled initials MADH(?) and struck with maker's mark 'BH', 17.2 cm long, total weight of item 1.070 ozt. **£200-300**



Fine Jewellery, Watches & Silver, 22nd Feb, 2024 09:30

- 279 A collection of musically themed miniature figures, comprising a silver gramophone by Harrison Brothers & Howson Ltd, a silver music stand by Casa Julia International, a silver grand piano with accompanying chair, a silver microphone, a silver jazz cat with saxophone, a six-piece silver drum set, a silver trumpet, a violin with continental silver hallmarks and a harp in unmarked white metal; 9.7 oz **£200-300**



- 280 A late 19th Century Russian trompe l'oeil silver casket box retailed by Ivan Khlebnikov. Of rounded rectangular form, the hinged cover with engraved and repoussé work imitates a draped, fringed blanket over a simulated basket weave box. Articulated rope twist side handles and rope twist hinged closure to centre (lacking flange), on four squared bracket feet with gilded interior. Moscow marks, Russian 84 mark. Dated 1886. Maker's mark Gershy Lezerin Gaselevich (ГЛ), Assayer's mark for Viktor Vasilyevich Savinsky, 14 x 10.5cm. 14.57ozt **£400-600**



- 281 A collection of miniatures comprising a silver four-piece tea and coffee service on a tray, two silver funnels, a pair of goblets marked 925, a dining table, a white metal chest of drawers with hinged cover and removable drawer together with a silver plated box in the form of a champagne bottle in an ice bucket and two goblets, (7). **£200-300**



- 282 An Edwardian silver double sovereign case with a stamp holder and a pull-out pencil, by Horace Woodward & Co Ltd, London 1903, rectangular form, hinged cover, designed to fit a sovereign and a half sovereign, with a ring attachment, engraved with a family crest and motto, length 8cm together with two silver double sovereign cases and a silver vesta case, 6.5ozt. **£300-500**



- 283 An Edwardian set of six silver coffee spoons by Liberty & Co Ltd, the bamboo-style handles leading to quatrefoil terminals, each set with an oval turquoise cabochon, Birmingham, 1905, in a fitted case; 1.76 ozt **£400-600**



Fine Jewellery, Watches & Silver, 22nd Feb, 2024 09:30

- 284 A Collection of silver and white metal figures comprising a silver bow-fronted sofa decorated with figures in landscapes, a silver figure of a dachshund, a white metal figure of a camera on a tripod, an unmarked salon chair and a silver figure of a puppy, 4.5ozt (5). **£200-300**



- 285 A collection of silver and white metal miniatures comprising a silver parrot on a perch, a silver rocking chair and a silver dining table together with a white metal corner chair stamped 800, a white metal wicker chair marks worn, three figures of cats and an acrylic globe on unmarked white metal stand, 4ozt gross, (9). **£200-300**



- 286 A large silver gilt trophy cup and cover. Known as The Barratt Cup. Inverted bell shape with reeded band to girdle; leaf-capped double scroll handles and stepped skirt foot; the pull-off domed cover with knopped finial. Commemorative engraving to centre, reading 'Presented to The Worshipful Company of Woolmen by Jon Barrett upon his installation as Master- on behalf of the Barrett family to commemorate his late father Thomas Barrett. Master 1968-69'. London 1929 by Sebastian Garrard. Inscribed to the base Garrard and Co Calcutta and London. 53.4 cm high x 41cm overall width. In fitted case by Holmes Burlington Arcade **£2,000-3,000**



- 287 A silver menorah with curved branches and columnar stem; to an engraved domed circular base. London 1928 by Moshe Rubin, 32 cm high; together with another menorah with angled arms and a shaped share baser. Birmingham 1963 by Alexander Smith. 23.5cm high. Gross weight 19ozt. (2) **£250-350**



- 288 A four-piece tea set, of panelled octagonal form, with octagonal skirt feet. Fruitwood handles and knops. The knop on the hot water jug is detached but present. Sheffield 1944 by Frank Cobb & Co Ltd. Together with a pair of silver plated sugar tongs. Total weighable 55 ozt. (5) **£600-800**



Fine Jewellery, Watches & Silver, 22nd Feb, 2024 09:30

- 289 A Queen Anne miniature silver porringer with flared rim, gadrooned lower body and scrolling handles, measuring 44mm diameter, 70mm from handle to handle, 31mm high, the base with rubbed hallmarks. Total weight 12.4g **£200-300**



- 290 A silver George III two-handled presentation cup by John Newcomb, London 1783, and an Edwardian silver cup, with scrolling and floral repoussé detailing, inscribed with the following: "D.R.C Sculling 1934", Sheffield, 1904; 19.58 ozt (2) **£200-300**



- 291 Six silver and white metal miniatures comprising a silver mangle on a half barrel tub with three splayed legs, a wood burner with an opening fire door, stamped 925, a water well with a bucket on chain, stamped 925, a spinning wheel with working tread mechanism, stamped 925, a telephone and a sewing machine, both stamped 925, 6.1ozt gross. **£200-300**

